

F39PA
C.4M21
GRAPHICS

STREET
RE-NUMBERING

CHICAGO STREET NUMBERING SYSTEM

An ordinance passed by the City Council June 22, 1908, amended June 21, 1909, and taking effect September 1, 1909 established the street numbering system now used in Chicago. The ordinance made Madison street, from the lake to the city limits, the baseline for numbering north and south streets. For east and west streets the baseline was State street or an imaginary line extended from State Street's northern terminus through Lincoln Park and the lake. Numbers began with 1 at State street and went east and west from there, 800 numbers to the mile. In a like manner numbers on north and south streets were figured from Madison street. One number was assigned to every twenty feet of frontage on a street. Even numbers were on the north side of east and west streets and on the west side of north and south streets.

The 1909 address change did not affect downtown Chicago, between the river and Roosevelt Road, the river and Lake Michigan. The ordinance was amended June 20, 1910 to include the downtown area. The new addresses for the "loop" went into use on April 1, 1911.

North-south streets south of Roosevelt Road (Twelfth street) and east of the Chicago river were not affected by this address change. An ordinance passed by the City Council on December 1, 1879 had renumbered the streets in this area. The change was made to bring the numbers into accord with the numbering system already used in Hyde Park and the Town of Lake. The system adopted in 1879 began the numbering of north-south streets south from Roosevelt Road (Twelfth Street) with 1200. North-south streets that began west of the river, but crossed to the east along their route used the new numbers only after crossing the river. This system was in use by June of 1880.

When Chicago streets were renumbered in 1909 the new system was altered slightly to accommodate this earlier renumbering. This adjustment was responsible for the one break with the 800 numbers to a mile rule. Between Madison street and Roosevelt Road (Twelfth Street) 1,200 numbers were used in one mile. Between Roosevelt (Twelfth) and Cermak Road (Twenty-second Street) 1000 numbers were used in one mile, and from Cermak (Twenty-second) to Thirty-first street 900 numbers were used in one mile.

Prior to the 1909 street renumbering Chicago street numbers were chaotic. There were several separate and distinct numbering systems. The baseline for street numbers varied from street to street. The location of a number on one street thus did not correspond to the location of the same number on another street running in the same direction. Critics often complained that the city's street numbers were without system.

F38PA
C4M21
~~125~~

PLAN OF RE-NUMBERING CITY OF CHICAGO

TABLE SHOWING NEW AND
OLD HOUSE NUMBERS

AUGUST, 1909

A compilation of legal house numbers from the records of the Bureau of Water as supplied from the atlases of the Bureau of Maps and Plats. There are necessarily omissions on account of wrong old house numbers used in the past, also in some instances where buildings on street corners have frontage on both streets, in which case the records give numbers on one frontage only.

Accession Number

Shelf Number



Received

RE-NUMBERING

CITY OF CHICAGO

A COMPLETE TABLE SHOWING NEW AND OLD NUMBERS AFFECTED
BY AN ORDINANCE PASSED BY THE CITY COUNCIL OF THE
CITY OF CHICAGO JUNE 22, 1908, AND AS AMENDED
BY AN ORDINANCE PASSED JUNE 21, 1909

710
711
712
713
714
715

CHICAGO
THE CHICAGO DIRECTORY COMPANY

1909

Copyright, 1909, by The Chicago Directory Company

EXPLANATORY

The new house numbering plan passed by the City Council June 22, 1908, to be in force and effect September 1, 1909, makes Madison Street from Lake Michigan to the city limits on the west the base line for numbering all north and south streets and streets running in northerly or southerly direction. For east and west streets and streets running in a generally east and west direction the base line is State Street from the southern city boundary line to North Avenue, thence extended by an imaginary line through Lincoln Park and Lake Michigan.

Eight hundred (800) numbers are assigned to each mile, or one hundred (100) numbers to each one-eighth of a mile. Commencing with No. 1 at the north line of Madison Street, the numbers run north at this rate to Lake Michigan or the northern city limits, and similarly south of Madison Street on streets running north and south the numbers commence with No. 1 at the south line of Madison and run to the southern city limits. In a like manner the numbers on east and west streets commence with No. 1 at the east line of State Street and run east to the lake, and with No. 1 at the west line of State Street and run west to the city limits. The prefixes North, South, East and West will be used on all streets, according to their location, which are open on each side of either of the base lines, State Street or Madison Street, and also on all numbered streets and numbered avenues, whether open on each side of the base lines or not. The prefixes will not be used on any named streets which are only open on one side of either of the base lines, such as Ann Street on the West Side, open only north of Madison, and Bowen Avenue on the South Side, open only east of State Street.

By this plan it is possible to easily tell the exact location of a number on any given street. On all east and west streets west of the base line 800 is at Halsted Street, 1600 at Ashland Avenue, 2400 at Western Avenue, 3200 at Kedzie Avenue, 4000 at Fortieth Avenue, 4800 at Forty-eighth Avenue, and intermediate numbers accordingly. On north and south streets north of the base line 800 is at Chicago Avenue, 1600 at North Avenue, 2400 at Fullerton Avenue, 3200 at Belmont Avenue, 4000 at Irving Park Boulevard, 5600 at Bryn Mawr Avenue, 6400 at Devon Avenue, and 7200 at Touhy Avenue. On the south side the old system of numbering north and south streets remains unchanged, which plan allowed 1200 numbers between Madison and Twelfth Streets, 1000 between Twelfth and Twenty-second Streets, and 900 between Twenty-second and Thirty-first Streets. South of Thirty-first Street the old and the new systems both allow 800 numbers to the mile.

The ordinance exempts from the new system the territory bounded on the north by the Chicago river, on the west by the South branch of the Chicago river, on the south by Twelfth street, and on the east by Lake Michigan, known as Chicago's business district.

Under the new law the even numbers on north and south streets and streets running in a northerly or southerly direction are on the West side of the street. The even numbers on east and west streets, or streets running in an easterly or westerly direction, are on the North side of the street.

NEW AND OLD HOUSE NUMBERS

West Adams St. CONTINUED

Table with multiple columns for street names (West Adams St., Addison Street, Agatite Avenue, Ainslie Street) and rows of house numbers (Even/Odd New/Old). Includes various numerical sequences and some handwritten annotations.

Table with columns: Ainslie Street, CONTINUED, Odd Nos. New Old, Even Nos. New Old. Lists house numbers for Ainslie Street.

Table with columns: Airdrie Place, Odd Nos. New Old, Even Nos. New Old. Lists house numbers for Airdrie Place.

Table with columns: Alaska Street, Odd Nos. New Old, Even Nos. New Old. Lists house numbers for Alaska Street.

Table with columns: North Albany Ave., Odd Nos. New Old, Even Nos. New Old. Lists house numbers for North Albany Ave.

Table with columns: Odd Nos. New Old, Even Nos. New Old. Lists house numbers for various streets.

Table with columns: Odd Nos. New Old, Even Nos. New Old. Lists house numbers for various streets.

Table with columns: Odd Nos. New Old, Even Nos. New Old. Lists house numbers for various streets, including Albert Street, Albion Avenue, and Aldine Avenue.

NEW AND OLD HOUSE NUMBERS

Armitage Avenue table with columns for New and Old house numbers, ranging from 2455 to 3825.

Table with columns for New and Old house numbers, ranging from 3527 to 5039.

Table with columns for New and Old house numbers, ranging from 3432 to 4808.

Table with columns for New and Old house numbers, ranging from 415 to 4808.

Table with columns for New and Old house numbers, ranging from 4846 to 1252.

Table with columns for New and Old house numbers, ranging from 1251 to 1323.

Table with columns for New and Old house numbers, ranging from 1254 to 1323.

Table with columns for New and Old house numbers, ranging from 1254 to 1323.

Table with columns for New and Old house numbers, ranging from 1254 to 1323.

Table with columns for New and Old house numbers, ranging from 1254 to 1323.

Armour Street

Table with columns for New and Old house numbers, ranging from 415 to 746.

North Artesian Ave.

Table with columns for New and Old house numbers, ranging from 209 to 1252.

South Artesian Ave.

Table with columns for New and Old house numbers, ranging from 2519 to 1321.

Arthington Street

Table with columns for New and Old house numbers, ranging from 1213 to 1321.

Ash Street

Table with columns for New and Old house numbers, ranging from 3949 to 2087.

Ashland Street

Table with columns for New and Old house numbers, ranging from 2015 to 2148.

NEW AND OLD HOUSE NUMBERS

Table with multiple columns for street names and house numbers. Streets include Barber Street, Barry Avenue, Belden Avenue, Barton Avenue, Bauwans Street, Beach Avenue, and Beethoven Place. Each entry lists 'Odd New' and 'Even Old' numbers.

NEW AND OLD HOUSE NUMBERS

Belmont Avenue

Table with columns: Odd New, Even New, Odd Old, Even Old. Rows include house numbers from 3221 to 3909.

Continued

Continuation of Belmont Avenue table with columns: Odd New, Even New, Odd Old, Even Old. Rows include house numbers from 1807 to 5807.

Bernard Street

Table with columns: Odd New, Even New, Odd Old, Even Old. Rows include house numbers from 3101 to 1409.

Berwyn Avenue

Table with columns: Odd New, Even New, Odd Old, Even Old. Rows include house numbers from 1349 to 1631.

Best Avenue

Table with columns: Odd New, Even New, Odd Old, Even Old. Rows include house numbers from 2609 to 2743.

Better Street

Table with columns: Odd New, Even New, Odd Old, Even Old. Rows include house numbers from 1100 to 1117.

Bickerdike Street

Table with columns: Odd New, Even New, Odd Old, Even Old. Rows include house numbers from 515 to 537.

Bingham Street

Table with columns: Odd New, Even New, Odd Old, Even Old. Rows include house numbers from 2005 to 2067.

Besly Court

Table with columns: Odd New, Even New, Odd Old, Even Old. Rows include house numbers from 1631 to 1659.

Berlin Street

Table with columns: Odd New, Even New, Odd Old, Even Old. Rows include house numbers from 2135 to 2333.

Berteau Avenue

Table with columns: Odd New, Even New, Odd Old, Even Old. Rows include house numbers from 1409 to 1411.

Birch Street

Table with columns: Odd New, Even New, Odd Old, Even Old. Rows include house numbers from 2015 to 2032.

Table with multiple columns and rows, organized by street names such as Birchwood Avenue, Bishop Court, Bismarck Place, Bissell Street, Blair Street, Blicher St., Blaine Place, Blair Street, Blicher St., Blanche Street, Blue Island Avenue, Bixby Court, Blackhawk Street, Bliss Street, and Bloomingdale Ave. Each entry lists 'Odd Nos.', 'Even Nos.', 'New Old', and 'New Old' numbers.

Table with multiple columns listing house numbers for various streets including Bryan Avenue, Buena Terrace, Buena Vista Place, Bullock Place, Buckingham Place, Bunker Street, Bryant Avenue, Burlington Street, Burhan Avenue, Bryn Mawr Avenue, Buena Avenue, Burton Place, and Byron Street. Each entry shows 'New' and 'Old' house numbers.

Table with 3 columns: Byron Street (Old, New, Old), Cable Street (New, Old), N. California Ave. (Old, New, Old)

Table with 3 columns: Cable Street (New, Old), N. California Ave. (Old, New, Old)

Table with 3 columns: Odd Nos. (New, Old), Even Nos. (New, Old), Odd Nos. (New, Old)

Table with 3 columns: Even Nos. (New, Old), Odd Nos. (New, Old), Even Nos. (New, Old)

Table with 3 columns: Odd Nos. (New, Old), Even Nos. (New, Old), Odd Nos. (New, Old)

S. California Ave.

Table with 3 columns: Odd Nos. (New, Old), Even Nos. (New, Old), Odd Nos. (New, Old) for S. California Ave.

Table with columns for street names and house numbers. Major sections include S. California Ave., Calland Court, Cambridge Avenue, N. Campbell Avenue, S. Campbell Avenue, North Canal Street, and South Canal Street. Each section lists 'Odd Nos.' and 'Even Nos.' for 'New' and 'Old' addresses.

Canalport Avenue

Table with 4 columns: Odd New, Even New, Odd Old, Even Old. Lists house numbers for Canalport Avenue.

Carl Street

Table with 4 columns: Odd New, Even New, Odd Old, Even Old. Lists house numbers for Carl Street.

Carlisle Place

Table with 4 columns: Odd New, Even New, Odd Old, Even Old. Lists house numbers for Carlisle Place.

Carmen Avenue

Table with 4 columns: Odd New, Even New, Odd Old, Even Old. Lists house numbers for Carmen Avenue.

Odd New, Even New, Odd Old, Even Old

Table with 4 columns: Odd New, Even New, Odd Old, Even Old. Lists house numbers for various streets.

Carolina Street

North Carpenter St.

Table with 4 columns: Odd New, Even New, Odd Old, Even Old. Lists house numbers for Carolina Street and North Carpenter St.

Odd New, Even New, Odd Old, Even Old

Table with 4 columns: Odd New, Even New, Odd Old, Even Old. Lists house numbers for various streets.

Carpenter Avenue

Carpenter Court

Table with 4 columns: Odd New, Even New, Odd Old, Even Old. Lists house numbers for Carpenter Avenue and Carpenter Court.

Carroll Avenue

Table with 4 columns: Odd New, Even New, Odd Old, Even Old. Lists house numbers for Carroll Avenue.

Odd New, Even New, Odd Old, Even Old

Table with 4 columns: Odd New, Even New, Odd Old, Even Old. Lists house numbers for various streets.

Odd New, Even New, Odd Old, Even Old

Table with 4 columns: Odd New, Even New, Odd Old, Even Old. Lists house numbers for various streets.

Even Contd

Cont'd 1st col

Table with multiple columns for street names and house numbers. Columns include 'Cass Street', 'Castlewood Terrace', 'Cemetery Drive', 'Centennial Place', 'Center Street', 'Central Street', 'Castello Avenue', 'East Cedar Street', 'Cedar Street (A)', 'North Central Av', and 'N. Central Pk. Av'. Each column contains a list of house numbers with 'Even' and 'Odd' designations.

N. Central Pk. Ave. CONTINUED

Table with 4 columns: Odd New, Odd Old, Even New, Even Old. Contains house numbers for N. Central Pk. Ave. from 1841 to 4025.

Table with 4 columns: Odd New, Odd Old, Even New, Even Old. Contains house numbers for S. Central Pk. Ave. from 113 to 1445.

Table with 4 columns: Even New, Even Old, Odd New, Odd Old. Contains house numbers for South Centre Av. from 9 to 300.

Table with 4 columns: Even New, Even Old, Odd New, Odd Old. Contains house numbers for North Centre Av. from 400 to 944.

Table with 4 columns: Even New, Even Old, Odd New, Odd Old. Contains house numbers for North Centre Av. from 944 to 1019.

Table with 4 columns: Even New, Even Old, Odd New, Odd Old. Contains house numbers for North Centre Av. from 1019 to 1114.

South Centre Ave. CONTINUED

Table with columns for Odd Nos. New/Old and Even Nos. New/Old, listing house numbers from 1021 to 2007.

Odd Nos. New/Old

Table with columns for Odd Nos. New/Old, listing house numbers from 2021 to 2214.

Even Nos. New/Old

Table with columns for Even Nos. New/Old, listing house numbers from 2143 to 2276.

Odd Nos. New/Old

Table with columns for Odd Nos. New/Old, listing house numbers from 1115 to 1167.

Even Nos. New/Old

Table with columns for Even Nos. New/Old, listing house numbers from 1134 to 1164.

Odd Nos. New/Old

Table with columns for Odd Nos. New/Old, listing house numbers from 119 to 173.

Even Nos. New/Old

Table with columns for Even Nos. New/Old, listing house numbers from 62 to 180.

Odd Nos. New/Old

Table with columns for Odd Nos. New/Old, listing house numbers from 151 to 211.

Even Nos. New/Old

Table with columns for Even Nos. New/Old, listing house numbers from 172 to 220.

Ceylon Avenue

Table with columns for Odd Nos. New/Old, listing house numbers from 5945 to 5971.

Channay Street

Table with columns for Odd Nos. New/Old, listing house numbers from 2725 to 2727.

Cheney Avenue

Table with columns for Odd Nos. New/Old, listing house numbers from 5729 to 5732.

Cherry Avenue

Table with columns for Odd Nos. New/Old, listing house numbers from 1115 to 1124.

Chestnut Place

Table with columns for Odd Nos. New/Old, listing house numbers from 871 to 907.

East Chicago Av.

Table with columns for Odd Nos. New/Old, listing house numbers from 39 to 41.

Cherry Place

Table with columns for Odd Nos. New/Old, listing house numbers from 2513 to 2537.

Chester Street

Table with columns for Odd Nos. New/Old, listing house numbers from 1637 to 1679.

Chatham Court

Table with columns for Odd Nos. New/Old, listing house numbers from 1107 to 1109.

West Chestnut St.

Table with columns for Odd Nos. New/Old, listing house numbers from 5 to 11.

West Chestnut St.

Table with columns for Odd Nos. New/Old, listing house numbers from 5 to 11.

West Chestnut St.

Table with columns for Odd Nos. New/Old, listing house numbers from 5 to 11.

West Chestnut St.

Table with columns for Odd Nos. New/Old, listing house numbers from 5 to 11.

West Chestnut St.

Table with columns for Odd Nos. New/Old, listing house numbers from 5 to 11.

West Chestnut St.

Table with columns for Odd Nos. New/Old, listing house numbers from 5 to 11.

West Chestnut St.

Table with columns for Odd Nos. New/Old, listing house numbers from 5 to 11.

West Chicago Ave. CONTINUED

Table with columns: Odd New, Odd Old, Even New, Even Old. Rows 1135-1613.

Table with columns: Odd New, Odd Old, Even New, Even Old. Rows 1615-2485.

Table with columns: Odd New, Odd Old, Even New, Even Old. Rows 2490-3360.

Table with columns: Odd New, Odd Old, Even New, Even Old. Rows 3365-4235.

Table with columns: Odd New, Odd Old, Even New, Even Old. Rows 4240-5110.

Table with columns: Odd New, Odd Old, Even New, Even Old. Rows 5115-5985.

Table with columns: Odd New, Odd Old, Even New, Even Old. Rows 5990-6860.

Table with columns: Odd New, Odd Old, Even New, Even Old. Rows 6865-7735.

Table with columns: Odd New, Odd Old, Even New, Even Old. Rows 7740-8610.

Odd Contd

Table with columns: Odd New, Odd Old, Even New, Even Old. Rows 5661-5955.

Chicago Terrace

Table with columns: Odd New, Odd Old, Even New, Even Old. Rows 3935-3963.

Choctaw Avenue

Table with columns: Odd New, Odd Old, Even New, Even Old. Rows 4513-4635.

Christiana Avenue

Table with columns: Odd New, Odd Old, Even New, Even Old. Rows 613-644.

Church Ct. (Austin)

Table with columns: Odd New, Odd Old, Even New, Even Old. Rows 5613-5612.

Church Place

Table with columns: Odd New, Odd Old, Even New, Even Old. Rows 1020-1042.

North Clark St.				Odd Nos.		Even Nos.		Odd Nos.		Even Nos.		Odd Nos.		Even Nos.		Odd Nos.					
CONTINUED				Old	New	Old	New	Old	New	Old	New	Old	New	Old	New	Old	New				
1007	1001	1002	1003	1551	644	1533	644 1/2	1362	553	3131	1618	2112	933	3833	2178	2822	1387	6313	4340	3458	1887
1007	1001	1002	1003	1551	644	1533	644 1/2	1362	553	3131	1618	2112	933	3833	2178	2822	1387	6313	4340	3458	1887
1007	1001	1002	1003	1551	644	1533	644 1/2	1362	553	3131	1618	2112	933	3833	2178	2822	1387	6313	4340	3458	1887
1007	1001	1002	1003	1551	644	1533	644 1/2	1362	553	3131	1618	2112	933	3833	2178	2822	1387	6313	4340	3458	1887
1007	1001	1002	1003	1551	644	1533	644 1/2	1362	553	3131	1618	2112	933	3833	2178	2822	1387	6313	4340	3458	1887
1007	1001	1002	1003	1551	644	1533	644 1/2	1362	553	3131	1618	2112	933	3833	2178	2822	1387	6313	4340	3458	1887
1007	1001	1002	1003	1551	644	1533	644 1/2	1362	553	3131	1618	2112	933	3833	2178	2822	1387	6313	4340	3458	1887
1007	1001	1002	1003	1551	644	1533	644 1/2	1362	553	3131	1618	2112	933	3833	2178	2822	1387	6313	4340	3458	1887
1007	1001	1002	1003	1551	644	1533	644 1/2	1362	553	3131	1618	2112	933	3833	2178	2822	1387	6313	4340	3458	1887
1007	1001	1002	1003	1551	644	1533	644 1/2	1362	553	3131	1618	2112	933	3833	2178	2822	1387	6313	4340	3458	1887
1007	1001	1002	1003	1551	644	1533	644 1/2	1362	553	3131	1618	2112	933	3833	2178	2822	1387	6313	4340	3458	1887

Even Cont'd

North Clark St.

Table with columns: Odd New, Even New, Odd Old, Even Old. Rows include street names like S. Clark Street, Clay Street, Clayton Court, and Cleaver Street.

S. Clark Street

Table with columns: Odd New, Even New, Odd Old, Even Old. Rows include street names like Clay Street, Clayton Court, and Cleaver Street.

Clay Street

Table with columns: Odd New, Even New, Odd Old, Even Old. Rows include street names like Clayton Court, and Cleaver Street.

Clayton Court

Table with columns: Odd New, Even New, Odd Old, Even Old. Rows include street names like Cleaver Street.

Cleaver Street

Table with columns: Odd New, Even New, Odd Old, Even Old. Rows include street names like North Clark St.

Even cont

Table with columns: Odd New, Even New, Odd Old, Even Old. Rows include street names like North Clark St.

North Clark Av.

Table with columns: Odd New, Even New, Odd Old, Even Old. Rows include street names like Cleveland Avenue.

Cleveland Avenue

Table with columns: Odd New, Even New, Odd Old, Even Old. Rows include street names like North Clark St.

Even cont

Table with columns: Odd New, Even New, Odd Old, Even Old. Rows include street names like North Clark St.

Clifton Avenue

Table with columns: Odd New, Even New, Odd Old, Even Old. Rows include street names like North Clark St.

Even cont

Table with columns: Odd New, Even New, Odd Old, Even Old. Rows include street names like North Clark St.

Even cont

Table with columns: Odd New, Even New, Odd Old, Even Old. Rows include street names like North Clark St.

N. Clarkson Court

Table with columns: Odd New, Even New, Odd Old, Even Old. Rows include street names like North Clark St.

Even cont

Table with columns: Odd New, Even New, Odd Old, Even Old. Rows include street names like North Clark St.

Even cont

Table with columns: Odd New, Even New, Odd Old, Even Old. Rows include street names like North Clark St.

Even cont

Table with columns: Odd New, Even New, Odd Old, Even Old. Rows include street names like North Clark St.

Even cont

Table with columns: Odd New, Even New, Odd Old, Even Old. Rows include street names like North Clark St.

Even cont

Table with columns: Odd New, Even New, Odd Old, Even Old. Rows include street names like North Clark St.

Clifton Avenue

Table with 4 columns: Add New, New Old, 23 Old, 28 Old. Rows include addresses like 4645 1702 and 4719 1800.

Table with 4 columns: Add New, New Old, 23 Old, 28 Old. Rows include addresses like 2305 1078 and 2405 1140.

Table with 4 columns: Add New, New Old, 23 Old, 28 Old. Rows include addresses like 2252 1067 and 2406 1141.

Table with 4 columns: Add New, New Old, 23 Old, 28 Old. Rows include addresses like 308 80 and 308 80.

Table with 4 columns: Add New, New Old, 23 Old, 28 Old. Rows include addresses like 168 23 S and 178 25 S.

Table with 4 columns: Add New, New Old, 23 Old, 28 Old. Rows include addresses like 1279 68 and 1281 70.

Table with 4 columns: Add New, New Old, 23 Old, 28 Old. Rows include addresses like 1300 93 and 1302 95.

Table with 4 columns: Add New, New Old, 23 Old, 28 Old. Rows include addresses like 1721 364 and 1723 366.

Table with 4 columns: Add New, New Old, 23 Old, 28 Old. Rows include addresses like 1758 397 and 1760 399.

Clifton Park Avenue

Table with 4 columns: Add New, New Old, 23 Old, 28 Old. Rows include addresses like 1413 700 and 2301 1076.

Table with 4 columns: Add New, New Old, 23 Old, 28 Old. Rows include addresses like 2111 866 and 2305 1078.

Table with 4 columns: Add New, New Old, 23 Old, 28 Old. Rows include addresses like 2406 1141 and 2406 1141.

Table with 4 columns: Add New, New Old, 23 Old, 28 Old. Rows include addresses like 2406 1141 and 2406 1141.

Table with 4 columns: Add New, New Old, 23 Old, 28 Old. Rows include addresses like 2406 1141 and 2406 1141.

Table with 4 columns: Add New, New Old, 23 Old, 28 Old. Rows include addresses like 2406 1141 and 2406 1141.

Table with 4 columns: Add New, New Old, 23 Old, 28 Old. Rows include addresses like 2406 1141 and 2406 1141.

Table with 4 columns: Add New, New Old, 23 Old, 28 Old. Rows include addresses like 2406 1141 and 2406 1141.

Table with 4 columns: Add New, New Old, 23 Old, 28 Old. Rows include addresses like 2406 1141 and 2406 1141.

South Clinton Street

Table with 4 columns: Add New, New Old, 23 Old, 28 Old. Rows include addresses like 7 88 and 1 90.

Table with 4 columns: Add New, New Old, 23 Old, 28 Old. Rows include addresses like 1201 2 and 1214 23.

North Clinton Street

Table with 4 columns: Add New, New Old, 23 Old, 28 Old. Rows include addresses like 12 67 S and 24 57 S.

Even cont.

Table with 4 columns: Add New, New Old, 23 Old, 28 Old. Rows include addresses like 228 66 and 230 70.

Odd cont.

Table with 4 columns: Add New, New Old, 23 Old, 28 Old. Rows include addresses like 1180 458 and 1141 480.

Clybourn Avenue

Table with 4 columns: Add New, New Old, 23 Old, 28 Old. Rows include addresses like 1201 2 and 1214 23.

West Congress St.

Table with columns: New, Old, New, Old, New, Old, New, Old, New, Old. Rows list house numbers for West Congress St.

Table with columns: New, Old, New, Old, New, Old, New, Old, New, Old. Rows list house numbers for West Congress St.

Table with columns: New, Old, New, Old, New, Old, New, Old, New, Old. Rows list house numbers for West Congress St.

Table with columns: New, Old, New, Old, New, Old, New, Old, New, Old. Rows list house numbers for West Congress St.

Table with columns: New, Old, New, Old, New, Old, New, Old, New, Old. Rows list house numbers for West Congress St.

Table with columns: New, Old, New, Old, New, Old, New, Old, New, Old. Rows list house numbers for West Congress St.

Table with columns: New, Old, New, Old, New, Old, New, Old, New, Old. Rows list house numbers for West Congress St.

Table with columns: New, Old, New, Old, New, Old, New, Old, New, Old. Rows list house numbers for West Congress St.

Table with columns: New, Old, New, Old, New, Old, New, Old, New, Old. Rows list house numbers for West Congress St.

Table with columns: New, Old, New, Old, New, Old, New, Old, New, Old. Rows list house numbers for West Congress St.

Cornelia Street

Even Contd

Table with columns: New, Old, New, Old, New, Old, New, Old, New, Old. Rows list house numbers for Cornelia Street.

Congress Park.

Table with columns: New, Old, New, Old, New, Old, New, Old, New, Old. Rows list house numbers for Congress Park.

Connors Street.

Table with columns: New, Old, New, Old, New, Old, New, Old, New, Old. Rows list house numbers for Connors Street.

Conrad Street.

Table with columns: New, Old, New, Old, New, Old, New, Old, New, Old. Rows list house numbers for Conrad Street.

Cooper Street

Table with columns: New, Old, New, Old, New, Old, New, Old, New, Old. Rows list house numbers for Cooper Street.

Corliss Avenue

Table with columns: New, Old, New, Old, New, Old, New, Old, New, Old. Rows list house numbers for Corliss Avenue.

Odd Contd

Table with columns: New, Old, New, Old, New, Old, New, Old, New, Old. Rows list house numbers for Corliss Avenue.

Diversey Boulevard

CONTINUED

Table with columns: Odd Nos. New, Old; Even Nos. New, Old. Lists house numbers for Diversey Boulevard.

Table with columns: Odd Nos. New, Old; Even Nos. New, Old. Lists house numbers for Diversey Avenue.

Table with columns: Odd Nos. New, Old; Even Nos. New, Old. Lists house numbers for Diversey Court.

Table with columns: Odd Nos. New, Old; Even Nos. New, Old. Lists house numbers for Diversey Street.

Table with columns: Odd Nos. New, Old; Even Nos. New, Old. Lists house numbers for West Division Street.

Table with columns: Odd Nos. New, Old; Even Nos. New, Old. Lists house numbers for West Division Street (continued).

Table with columns: Odd Nos. New, Old; Even Nos. New, Old. Lists house numbers for West Division Street (continued).

Table with columns: Odd Nos. New, Old; Even Nos. New, Old. Lists house numbers for West Division Street (continued).

Table with columns: Odd Nos. New, Old; Even Nos. New, Old. Lists house numbers for West Division Street (continued).

Table with columns: Odd Nos. New, Old; Even Nos. New, Old. Lists house numbers for West Division Street (continued).

NEW AND OLD HOUSE NUMBERS

West Division St. CONTINUED

Table with columns: New Old, Even Nos., Odd Nos., listing house numbers and their corresponding old numbers.

Even Nos. New Old

Table with columns: New Old, listing house numbers and their corresponding old numbers.

Even Nos. New Old

Table with columns: New Old, listing house numbers and their corresponding old numbers.

Even Nos. New Old

Table with columns: New Old, listing house numbers and their corresponding old numbers.

Even Nos. New Old

Table with columns: New Old, listing house numbers and their corresponding old numbers.

Even Nos. New Old

Table with columns: New Old, listing house numbers and their corresponding old numbers.

Even Nos. New Old

Table with columns: New Old, listing house numbers and their corresponding old numbers.

Even Nos. New Old

Table with columns: New Old, listing house numbers and their corresponding old numbers.

Even Nos. New Old

Table with columns: New Old, listing house numbers and their corresponding old numbers.

Even Cont

Even Cont

Doyles Place

Table with columns: New Old, listing house numbers and their corresponding old numbers.

3033 265

Drake Avenue

Table with columns: New Old, listing house numbers and their corresponding old numbers.

Douglas Place

Table with columns: New Old, listing house numbers and their corresponding old numbers.

Odd Cont

Dominick Street

Table with columns: New Old, listing house numbers and their corresponding old numbers.

Douglas Boulevard

Table with columns: New Old, listing house numbers and their corresponding old numbers.

Cont'd 2d col

Dover Street

Table with columns: New Old, listing house numbers and their corresponding old numbers.

Even Contd

Cont'd 1st col

Table with multiple columns for street names (Drexel Square, Eberly Avenue, Eagle Street, Early Avenue, East Court, Eastman Street, Eastwood Avenue, Edgwater Avenue, Edgcomb Place, Edgemont Avenue, Edgewater Terrace, Edgewater Avenue, Edmonds Street, Edward Court, Edwards Street, East 18th Street, West 18th Street) and rows of house numbers (Old Nos., New Nos.).

NEW AND OLD HOUSE NUMBERS

West 18th Street

Table with columns: New, Old, Even Nos., Odd Nos. Rows 1-118.

Table with columns: New, Old, Even Nos., Odd Nos. Rows 118-236.

Table with columns: New, Old, Even Nos., Odd Nos. Rows 236-354.

Table with columns: New, Old, Even Nos., Odd Nos. Rows 354-472.

Table with columns: New, Old, Even Nos., Odd Nos. Rows 472-590.

East 80th Street

Table with columns: New, Old, Even Nos., Odd Nos. Rows 590-675.

West 80th Street

Table with columns: New, Old, Even Nos., Odd Nos. Rows 675-760.

West 18th Place

Table with columns: New, Old, Even Nos., Odd Nos. Rows 760-845.

NEW AND OLD HOUSE NUMBERS

Table with columns for street names and house numbers, organized into sections for East 80th Place, East 81st Place, West 80th Place, West 81st Place, East 82nd Street, West 82nd Place, East 83rd Street, West 83rd Place, East 84th Street, West 84th Street, East 85th Street, West 85th Street, East 86th Street, West 86th Place, East 87th Street, West 87th Street, East 88th Place, West 88th Street, East 89th Street, West 89th Street, Elbridge Avenue, North Elizabeth St., and Elburn Avenue. Each section lists house numbers in their original and new configurations.

Emerson Avenue

Table with columns: Odd Nos., Even Nos., New Old, Even Nos., New Old. Rows list house numbers from 2125 to 2247.

Odd Nos.

Table with columns: New Old, Even Nos., New Old. Rows list house numbers from 2424 to 2536.

Even Nos.

Table with columns: New Old, Even Nos., New Old. Rows list house numbers from 2318 to 2416.

Odd Nos.

Table with columns: New Old, Even Nos., New Old. Rows list house numbers from 10528 to 10552.

Even Nos.

Table with columns: New Old, Even Nos., New Old. Rows list house numbers from 10432 to 10456.

Odd Nos.

Table with columns: New Old, Even Nos., New Old. Rows list house numbers from 857 to 802.

Even Nos.

Table with columns: New Old, Even Nos., New Old. Rows list house numbers from 502 to 816.

Odd Nos.

Table with columns: New Old, Even Nos., New Old. Rows list house numbers from 27 to 1709.

Even Nos.

Table with columns: New Old, Even Nos., New Old. Rows list house numbers from 1837 to 1711.

Enfield Avenue

Table with columns: Even Nos., New Old, Even Nos., New Old. Rows list house numbers from 3965 to 3993.

East Erie Street

Table with columns: Even Nos., New Old, Even Nos., New Old. Rows list house numbers from 1 to 240.

Englewood Avenue

Table with columns: Even Nos., New Old, Even Nos., New Old. Rows list house numbers from 213 to 239.

West Erie Street

Table with columns: Even Nos., New Old, Even Nos., New Old. Rows list house numbers from 1 to 480.

Emma Street

Table with columns: Odd Nos., Even Nos., New Old, Even Nos., New Old. Rows list house numbers from 1401 to 1547.

Even Nos.

Table with columns: New Old, Even Nos., New Old. Rows list house numbers from 1420 to 1546.

Emmett Street

Table with columns: Odd Nos., Even Nos., New Old, Even Nos., New Old. Rows list house numbers from 2623 to 2639.

Even Nos.

Table with columns: New Old, Even Nos., New Old. Rows list house numbers from 2604 to 2638.

Ems Street

Table with columns: Odd Nos., Even Nos., New Old, Even Nos., New Old. Rows list house numbers from 2417 to 2537.

Ericsson Avenue

Table with columns: Even Nos., New Old, Even Nos., New Old. Rows list house numbers from 10400 to 10428.

Even Cont

Table with columns: Even Nos., New Old, Even Nos., New Old. Rows list house numbers from 10406 to 10430.

Even Cont

Table with columns: Even Nos., New Old, Even Nos., New Old. Rows list house numbers from 2418 to 2420.

Even Cont

Table with columns: Even Nos., New Old, Even Nos., New Old. Rows list house numbers from 10506 to 10524.

Even Cont

Table with columns: Even Nos., New Old, Even Nos., New Old. Rows list house numbers from 10428 to 10430.

Even Cont

Table with columns: Even Nos., New Old, Even Nos., New Old. Rows list house numbers from 10428 to 10430.

Even Cont

Table with columns: Even Nos., New Old, Even Nos., New Old. Rows list house numbers from 1837 to 1942.

NEW AND OLD HOUSE NUMBERS

West Erie Street CONTINUED

Table with columns: Old Nos., New Nos., Old Nos., New Nos. (repeated for multiple rows)

Even Cont. Table with columns: Old Nos., New Nos., Old Nos., New Nos.

Odd Nos.

Table with columns: Old Nos., New Nos., Old Nos., New Nos.

Even Nos.

Table with columns: Old Nos., New Nos., Old Nos., New Nos.

Odd Nos.

Table with columns: Old Nos., New Nos., Old Nos., New Nos.

Even Nos.

Table with columns: Old Nos., New Nos., Old Nos., New Nos.

Odd Nos.

Table with columns: Old Nos., New Nos., Old Nos., New Nos.

Even Nos.

Table with columns: Old Nos., New Nos., Old Nos., New Nos.

Odd Nos.

Table with columns: Old Nos., New Nos., Old Nos., New Nos.

Even Nos.

Table with columns: Old Nos., New Nos., Old Nos., New Nos.

Odd Nos.

Table with columns: Old Nos., New Nos., Old Nos., New Nos.

Even Nos.

Table with columns: Old Nos., New Nos., Old Nos., New Nos.

Odd Nos.

Table with columns: Old Nos., New Nos., Old Nos., New Nos.

Even Nos.

Table with columns: Old Nos., New Nos., Old Nos., New Nos.

Estes Avenue

Table with columns: Old Nos., New Nos., Old Nos., New Nos.

Cont'd 1st col

Table with columns: Old Nos., New Nos., Old Nos., New Nos.

Cont'd 2d col

Table with columns: Old Nos., New Nos., Old Nos., New Nos.

Evanson Avenue

Table with columns: Old Nos., New Nos., Old Nos., New Nos.

Evergreen Avenue

Table with columns: Old Nos., New Nos., Old Nos., New Nos.

Even Cont. Table with columns: Old Nos., New Nos., Old Nos., New Nos.

Even Cont. Table with columns: Old Nos., New Nos., Old Nos., New Nos.

Even Cont. Table with columns: Old Nos., New Nos., Old Nos., New Nos.

Even Cont. Table with columns: Old Nos., New Nos., Old Nos., New Nos.

Even Cont. Table with columns: Old Nos., New Nos., Old Nos., New Nos.

Even Cont. Table with columns: Old Nos., New Nos., Old Nos., New Nos.

Even Cont. Table with columns: Old Nos., New Nos., Old Nos., New Nos.

Even Cont. Table with columns: Old Nos., New Nos., Old Nos., New Nos.

Even Cont. Table with columns: Old Nos., New Nos., Old Nos., New Nos.

Even Cont. Table with columns: Old Nos., New Nos., Old Nos., New Nos.

Even Cont. Table with columns: Old Nos., New Nos., Old Nos., New Nos.

Even Cont. Table with columns: Old Nos., New Nos., Old Nos., New Nos.

Even Cont. Table with columns: Old Nos., New Nos., Old Nos., New Nos.

Table with multiple columns for street names (Evergreen Ave., Ewing Street, etc.) and house numbers, organized into 'New' and 'Old' columns. Includes sub-sections like 'Even Cont', 'Odd Cont', and 'Fair Place'.

Farragut Avenue CONTINUED

Table with columns: Odd Nos. New, Old; Even Nos. New, Old. Rows list house numbers from 1629 to 2351.

Odd Nos. New, Old

Table with columns: Odd Nos. New, Old. Rows list house numbers from 1629 to 2351.

Even Nos. New, Old

Table with columns: Even Nos. New, Old. Rows list house numbers from 1634 to 2351.

Odd Nos. New, Old

Table with columns: Odd Nos. New, Old. Rows list house numbers from 637 to 2351.

Even Nos. New, Old

Table with columns: Even Nos. New, Old. Rows list house numbers from 710 to 2351.

Odd Nos. New, Old

Table with columns: Odd Nos. New, Old. Rows list house numbers from 1627 to 2351.

Even Nos. New, Old

Table with columns: Even Nos. New, Old. Rows list house numbers from 1702 to 2351.

Odd Nos. New, Old

Table with columns: Odd Nos. New, Old. Rows list house numbers from 2653 to 2351.

Even Nos. New, Old

Table with columns: Even Nos. New, Old. Rows list house numbers from 1702 to 2351.

Farwell Avenue

Table with columns: Odd Nos. New, Old; Even Nos. New, Old. Rows list house numbers from 1125 to 1615.

West 15th Street

Table with columns: Odd Nos. New, Old; Even Nos. New, Old. Rows list house numbers from 8 to 128.

West 15th Place

Table with columns: Odd Nos. New, Old; Even Nos. New, Old. Rows list house numbers from 8 to 128.

West 50th Street

Table with columns: Odd Nos. New, Old; Even Nos. New, Old. Rows list house numbers from 215 to 935.

East 50th Street

Table with columns: Odd Nos. New, Old; Even Nos. New, Old. Rows list house numbers from 201 to 985.

Odd Cont

Table with columns: Odd Nos. New, Old; Even Nos. New, Old. Rows list house numbers from 1081 to 1330.

Even Cont

Table with columns: Even Nos. New, Old; Odd Nos. New, Old. Rows list house numbers from 1081 to 1330.

919 Drexel

Table with columns: Odd Nos. New, Old; Even Nos. New, Old. Rows list house numbers from 1081 to 1330.

1199 Drexel

Table with columns: Odd Nos. New, Old; Even Nos. New, Old. Rows list house numbers from 1081 to 1330.

NEW AND OLD HOUSE NUMBERS

North 51st Ave.

Table with columns: Old Nos., New Old, Even Cont, and various house numbers. Includes 'CONTINUED' and 'Even Cont' labels.

Old Nos. New Old

Table with columns: Old Nos., New Old, and house numbers.

Even Nos. New Old

Table with columns: Even Nos., New Old, and house numbers.

Old Nos. New Old

Table with columns: Old Nos., New Old, and house numbers.

Even Nos. New Old

Table with columns: Even Nos., New Old, and house numbers.

Old Nos. New Old

Table with columns: Old Nos., New Old, and house numbers.

Even Nos. New Old

Table with columns: Even Nos., New Old, and house numbers.

Old Nos. New Old

Table with columns: Old Nos., New Old, and house numbers.

Even Nos. New Old

Table with columns: Even Nos., New Old, and house numbers.

North 51st Court

Table with columns: Old Nos., New Old, and house numbers.

West 51st Place

Table with columns: Old Nos., New Old, and house numbers.

North 52d Avenue

Table with columns: Old Nos., New Old, and house numbers.

South 52d Avenue

Table with columns: Old Nos., New Old, and house numbers.

West 52d Place

Table with columns: Old Nos., New Old, and house numbers.

East 53d Street

Table with columns: Old Nos., New Old, and house numbers.

North 53d Avenue

Table with columns: Old Nos., New Old, and house numbers.

East 52d Street

Table with columns: Old Nos., New Old, and house numbers.

East 52d Street

Table with columns: Old Nos., New Old, and house numbers.

West 52d Street

Table with columns: Old Nos., New Old, and house numbers.

Cont'd 1st col

West 53d Street

Even Cont

Cont'd 1st col

Cont'd 1st col

Cont'd 1st col

Cont'd 1st col

Cont'd 1st col

Cont'd 1st col

Cont'd 1st col

Cont'd 1st col

Cont'd 1st col

Cont'd 1st col

Cont'd 1st col

Cont'd 1st col

Cont'd 1st col

Cont'd 1st col

Cont'd 1st col

Cont'd 1st col

Cont'd 1st col

Cont'd 1st col

Cont'd 1st col

Cont'd 1st col

Cont'd 1st col

Cont'd 1st col

Cont'd 1st col

Cont'd 1st col

Cont'd 1st col

Cont'd 1st col

Cont'd 1st col

Cont'd 1st col

Cont'd 1st col

Cont'd 1st col

Cont'd 1st col

Cont'd 1st col

Cont'd 1st col

Cont'd 1st col

Cont'd 1st col

Cont'd 1st col

Cont'd 1st col

Cont'd 1st col

Cont'd 1st col

Cont'd 1st col

Cont'd 1st col

Cont'd 1st col

Cont'd 1st col

Cont'd 1st col

Cont'd 1st col

Cont'd 1st col

Cont'd 1st col

Cont'd 1st col

Cont'd 1st col

Cont'd 1st col

Cont'd 1st col

Cont'd 1st col

Cont'd 1st col

Cont'd 1st col

Cont'd 1st col

Main table containing house numbers for various streets including North 53d Avenue, North 54th Avenue, North 54th Court, West 53d Place, East 54th Street, North 54th Court, East 54th Place, West 54th Street, West 56th Street, and North 53d Court. Each section includes columns for 'Odd Nos.', 'Even Nos.', 'New', and 'Old' house numbers, with some sections also including 'North 55th Avenue' or 'East 55th Place'.

West 56th Street CONTINUED

Table with columns: Odd Nos. New Old, Even Nos. New Old. Rows of house numbers from 541 to 2365.

Odd Nos. New Old, Even Nos. New Old

Table with columns: Odd Nos. New Old, Even Nos. New Old. Rows of house numbers from 1541 to 1582.

Odd Nos. New Old, Even Nos. New Old

Table with columns: Odd Nos. New Old, Even Nos. New Old. Rows of house numbers from 2308 to 2396.

Odd Nos. New Old, Even Nos. New Old

Table with columns: Odd Nos. New Old, Even Nos. New Old. Rows of house numbers from 1149 to 3720.

Odd Nos. New Old, Even Nos. New Old

Table with columns: Odd Nos. New Old, Even Nos. New Old. Rows of house numbers from 540 to 1516.

West 57th Place

Table with columns: Odd Nos. New Old, Even Nos. New Old. Rows of house numbers from 7 to 616.

North 58th Avenue

Table with columns: Odd Nos. New Old, Even Nos. New Old. Rows of house numbers from 2035 to 2331.

North 56th Avenue

Table with columns: Odd Nos. New Old, Even Nos. New Old. Rows of house numbers from 2443 to 5735.

West 57th Street

Table with columns: Odd Nos. New Old, Even Nos. New Old. Rows of house numbers from 151 to 517.

West 57th Street

Table with columns: Odd Nos. New Old, Even Nos. New Old. Rows of house numbers from 443 to 543.

West 58th Place

Table with columns: Odd Nos. New Old, Even Nos. New Old. Rows of house numbers from 3607 to 3617.

North 56th Court

Table with columns: Odd Nos. New Old, Even Nos. New Old. Rows of house numbers from 2027 to 5613.

West 57th Street

Table with columns: Odd Nos. New Old, Even Nos. New Old. Rows of house numbers from 523 to 1123.

East 58th Street

Table with columns: Odd Nos. New Old, Even Nos. New Old. Rows of house numbers from 201 to 302.

East 59th Street

Table with columns: Odd Nos. New Old, Even Nos. New Old. Rows of house numbers from 67 to 349.

West 56th Place

Table with columns: Odd Nos. New Old, Even Nos. New Old. Rows of house numbers from 403 to 517.

Even Cont

Table with columns: Odd Nos. New Old, Even Nos. New Old. Rows of house numbers from 1034 to 1714.

Even Cont

Table with columns: Odd Nos. New Old, Even Nos. New Old. Rows of house numbers from 1316 to 1024.

West 59th Street

Table with columns: Odd Nos. New Old, Even Nos. New Old. Rows of house numbers from 19 to 220.

North 57th Avenue

Table with columns: Odd Nos. New Old, Even Nos. New Old. Rows of house numbers from 2037 to 2344.

Even Cont

Table with columns: Odd Nos. New Old, Even Nos. New Old. Rows of house numbers from 1360 to 1364.

West 58th Street

Table with columns: Odd Nos. New Old, Even Nos. New Old. Rows of house numbers from 21 to 220.

East 57th Street

Table with columns: Odd Nos. New Old, Even Nos. New Old. Rows of house numbers from 13 to 1427.

North 57th Court

Table with columns: Odd Nos. New Old, Even Nos. New Old. Rows of house numbers from 2023 to 2304.

West 58th Street

Table with columns: Odd Nos. New Old, Even Nos. New Old. Rows of house numbers from 210 to 547.

West 59th Avenue

Table with columns: Odd Nos. New Old, Even Nos. New Old. Rows of house numbers from 2251 to 2345.

North 59th Court

Table with columns: Odd Nos. New Old, Even Nos. New Old. Rows of house numbers from 2220 to 2344.

Flournoy Street CONTINUED

Table with columns: New, Old, New, Old. Rows of house numbers from 3015 to 3817.

Table with columns: Odd Nos. New, Old. Rows of house numbers from 3819 to 3820.

Table with columns: Even Nos. New, Old. Rows of house numbers from 3822 to 3823.

Table with columns: Odd Nos. New, Old. Rows of house numbers from 733 to 734.

Table with columns: Even Nos. New, Old. Rows of house numbers from 736 to 737.

Table with columns: Odd Nos. New, Old. Rows of house numbers from 738 to 739.

Table with columns: Even Nos. New, Old. Rows of house numbers from 740 to 741.

Table with columns: Odd Nos. New, Old. Rows of house numbers from 742 to 743.

Table with columns: Even Nos. New, Old. Rows of house numbers from 744 to 745.

North 40th Avenue

Table with columns: New, Old, New, Old. Rows of house numbers from 1156 S to 1157 S.

East 40th Street

Table with columns: New, Old, New, Old. Rows of house numbers from 63 to 64.

Forest Street

Table with columns: New, Old, New, Old. Rows of house numbers from 7069 to 7070.

Forest Glen Avenue

Table with columns: New, Old, New, Old. Rows of house numbers from 5406 to 5407.

Forquer Street

Table with columns: New, Old, New, Old. Rows of house numbers from 425 to 426.

West 40th Street

Table with columns: New, Old, New, Old. Rows of house numbers from 301 to 302.

Odd Cont

Table with columns: New, Old, New, Old. Rows of house numbers from 747 to 748.

Even Cont

Table with columns: New, Old, New, Old. Rows of house numbers from 751 to 752.

Odd Cont

Table with columns: New, Old, New, Old. Rows of house numbers from 4939 to 4940.

Even Cont

Table with columns: New, Old, New, Old. Rows of house numbers from 4943 to 4944.

South 40th Avenue

Table with columns: New, Old, New, Old. Rows of house numbers from 617 to 618.

North 41st Court CONTINUED

South 41st Court

Odd Nos. New Old

Even Nos. New Old

Odd Nos. New Old

Even Nos. New Old

Odd Nos. New Old

Even Nos. New Old

Table with columns for North 41st Court house numbers, including 'Odd Nos.', 'Even Nos.', 'New', and 'Old'.

Table with columns for South 41st Court house numbers, including 'Odd Nos.', 'Even Nos.', 'New', and 'Old'.

East 42d Street

Table with columns for East 42d Street house numbers, including 'Odd Nos.', 'Even Nos.', 'New', and 'Old'.

West 42d Street

Table with columns for West 42d Street house numbers, including 'Odd Nos.', 'Even Nos.', 'New', and 'Old'.

Table with columns for Odd Nos. New Old, including 'Odd Cont'.

North 42d Avenue

Table with columns for North 42d Avenue house numbers, including 'Odd Nos.', 'Even Nos.', 'New', and 'Old'.

Table with columns for Even Nos. New Old, including 'Odd Cont'.

North 42d Court

Table with columns for North 42d Court house numbers, including 'Odd Nos.', 'Even Nos.', 'New', and 'Old'.

Table with columns for Odd Nos. New Old, including 'Odd Cont'.

North 42d Avenue

Table with columns for North 42d Avenue house numbers, including 'Odd Nos.', 'Even Nos.', 'New', and 'Old'.

Table with columns for Even Nos. New Old, including 'Odd Cont'.

North 42d Court

Table with columns for North 42d Court house numbers, including 'Odd Nos.', 'Even Nos.', 'New', and 'Old'.

Table with columns for Odd Nos. New Old, including 'Odd Cont'.

South 42d Avenue

Table with columns for South 42d Avenue house numbers, including 'Odd Nos.', 'Even Nos.', 'New', and 'Old'.

North 42d Court

Table with columns for North 42d Court house numbers, including 'Odd Nos.', 'Even Nos.', 'New', and 'Old'.

Table with columns for Even Nos. New Old, including 'Odd Cont'.

South 42d Avenue

Table with columns for South 42d Avenue house numbers, including 'Odd Nos.', 'Even Nos.', 'New', and 'Old'.

North 42d Court

Table with columns for North 42d Court house numbers, including 'Odd Nos.', 'Even Nos.', 'New', and 'Old'.

Even Cont

Table with columns for Even Cont house numbers.

Cont'd 1st col

Table with columns for Cont'd 1st col house numbers.

Cont'd 1st col

Table with columns for Cont'd 1st col house numbers.

Cont'd 1st col

Table with columns for Cont'd 1st col house numbers.

Cont'd 1st col

Table with columns for Cont'd 1st col house numbers.

Cont'd 1st col

Table with columns for Cont'd 1st col house numbers.

Cont'd 1st col

Table with columns for Cont'd 1st col house numbers.

Cont'd 1st col

Table with columns for Cont'd 1st col house numbers.

Cont'd 1st col

Table with columns for Cont'd 1st col house numbers.

NEW AND OLD HOUSE NUMBERS

West 43d Street

Table with columns: Odd Nos. New Old, Even Nos. New Old. Rows include 1929 2035, 1931, 2121 2237, etc.

South 43d Avenue

Table with columns: Odd Nos. New Old, Even Nos. New Old. Rows include 613 462, 615 148, 619 468, etc.

North 43d Court

Table with columns: Odd Nos. New Old, Even Nos. New Old. Rows include 203 78, 207 78, 213 68, etc.

West 43d Place

Table with columns: Odd Nos. New Old, Even Nos. New Old. Rows include 333 443, 347 445, 441 541, etc.

East 44th Street

Table with columns: Odd Nos. New Old, Even Nos. New Old. Rows include 19 814, 21 812, 25 808, etc.

North 44th Avenue

Table with columns: Odd Nos. New Old, Even Nos. New Old. Rows include 201 82 s, 203 80 s, 207 76 s, etc.

South 44th Avenue

Table with columns: Odd Nos. New Old, Even Nos. New Old. Rows include 121 110, 125 112, 131 112, etc.

South 44th Court

Table with columns: Odd Nos. New Old, Even Nos. New Old. Rows include 619 468, 621 470, 623 472, etc.

East 44th Place

Table with columns: Odd Nos. New Old, Even Nos. New Old. Rows include 511 524, 513 522, 515 520, etc.

West 44th Place

Table with columns: Odd Nos. New Old, Even Nos. New Old. Rows include 437 537, 439 539, 441 541, etc.

West 44th Street

Table with columns: Odd Nos. New Old, Even Nos. New Old. Rows include 106 3017, 108 3019, 114 3023, etc.

North 44th Court

Table with columns: Odd Nos. New Old, Even Nos. New Old. Rows include 1909 1080, 1913 1086, 1921 1092, etc.

East 45th Street

Table with columns: Odd Nos. New Old, Even Nos. New Old. Rows include 59 806, 211 716, 215 718, etc.

Continued text at the bottom of the page.

NEW AND OLD HOUSE NUMBERS

Table with multiple columns for street names (East 45th Street, South 45th Avenue, North 45th Avenue, East 46th Street, South 45th Court, West 45th Street, East 45th Place, West 45th Place, North 46th Avenue, North 46th Street, West 46th Street) and rows for house numbers, including 'Odd Nos.', 'Even Nos.', and 'New Old' columns.

NEW AND OLD HOUSE NUMBERS

North 46th Court CONTINUED

Table with 2 columns: Odd Nos. New Old, Even Nos. New Old. Lists house numbers for North 46th Court.

East 46th Place

Table with 2 columns: Odd Nos. New Old, Even Nos. New Old. Lists house numbers for East 46th Place.

West 46th Place

Table with 2 columns: Odd Nos. New Old, Even Nos. New Old. Lists house numbers for West 46th Place.

East 47th Street

Table with 2 columns: Odd Nos. New Old, Even Nos. New Old. Lists house numbers for East 47th Street.

Odd Nos. New Old

Table with 2 columns: Odd Nos. New Old. Lists house numbers for Odd Nos.

Even Nos. New Old

Table with 2 columns: Even Nos. New Old. Lists house numbers for Even Nos.

West 47th Street

Table with 2 columns: Odd Nos. New Old, Even Nos. New Old. Lists house numbers for West 47th Street.

Odd Nos. New Old

Table with 2 columns: Odd Nos. New Old. Lists house numbers for Odd Nos.

Even Nos. New Old

Table with 2 columns: Even Nos. New Old. Lists house numbers for Even Nos.

Odd Nos. New Old

Table with 2 columns: Odd Nos. New Old. Lists house numbers for Odd Nos.

Even Nos. New Old

Table with 2 columns: Even Nos. New Old. Lists house numbers for Even Nos.

Odd Nos. New Old

Table with 2 columns: Odd Nos. New Old. Lists house numbers for Odd Nos.

Cont'd 2d col

North 47th Avenue

Table with 2 columns: Odd Nos. New Old, Even Nos. New Old. Lists house numbers for North 47th Avenue.

Cont'd 1st col

South 47th Avenue

Table with 2 columns: Odd Nos. New Old, Even Nos. New Old. Lists house numbers for South 47th Avenue.

North 47th Court

Table with 2 columns: Odd Nos. New Old, Even Nos. New Old. Lists house numbers for North 47th Court.

East 47th Place

Table with 2 columns: Odd Nos. New Old, Even Nos. New Old. Lists house numbers for East 47th Place.

West 47th Place

Table with 2 columns: Odd Nos. New Old, Even Nos. New Old. Lists house numbers for West 47th Place.

Cont'd 1st col

West 14th Place

Odd Nos. Old

Even Nos. Old

Francis Street

Odd Nos. Old

Even Nos. Old

Odd Nos. Old

Even Nos. Old

Table with columns for West 14th Place, Odd Nos. Old, and Even Nos. Old. Contains house numbers from 729 to 1043.

Table with columns for Odd Nos. Old and Even Nos. Old. Contains house numbers from 1645 to 2778.

Table with columns for Francis Street, Odd Nos. Old, and Even Nos. Old. Contains house numbers from 1125 to 1687.

Table with columns for Francis Street, Odd Nos. Old, and Even Nos. Old. Contains house numbers from 1125 to 1687.

Table with columns for Odd Nos. Old and Even Nos. Old. Contains house numbers from 1633 to 2813.

Table with columns for Even Nos. Old and Odd Nos. Old. Contains house numbers from 1736 to 3008.

Table with columns for Odd Nos. Old and Even Nos. Old. Contains house numbers from 2817 to 3012.

Table with columns for Even Nos. Old and Odd Nos. Old. Contains house numbers from 3012 to 3636.

North Francisco Av

Table with columns for North Francisco Av, Odd Nos. Old, and Even Nos. Old. Contains house numbers from 113 to 1687.

Fowler Street

Table with columns for Fowler Street, Odd Nos. Old, and Even Nos. Old. Contains house numbers from 2008 to 2140.

Fox Court

Table with columns for Fox Court, Odd Nos. Old, and Even Nos. Old. Contains house numbers from 1313 to 1341.

Frances Place

Table with columns for Frances Place, Odd Nos. Old, and Even Nos. Old. Contains house numbers from 2631 to 2778.

South Francisco Av

Table with columns for South Francisco Av, Odd Nos. Old, and Even Nos. Old. Contains house numbers from 115 to 3012.

Frank Street

Table with columns for Frank Street, Odd Nos. Old, and Even Nos. Old. Contains house numbers from 1033 to 1088.

Frank Street CONTINUED

Table with columns: Odd Nos. New, Old, Even Nos. New, Old. Lists house numbers for Frank Street.

Cont'd 2d col

Frankfort Street

Table with columns: 2023-2857 (left), 18-278 (middle), 9-178 (right). Lists house numbers for Frankfort Street.

North Franklin St.

Table with columns: 509-865 (left), 75-283 (middle), 440-178 (right). Lists house numbers for North Franklin St.

Odd Nos. New Old

Table with columns: Odd Nos. New, Old, Even Nos. New, Old. Lists house numbers for Odd Nos. street.

Even Nos. New Old

Table with columns: Even Nos. New, Old, Odd Nos. New, Old. Lists house numbers for Even Nos. street.

Franklin Boulevard

Table with columns: Even Nos. New, Old, Odd Nos. New, Old. Lists house numbers for Franklin Boulevard.

Even Cont

Frederick Place

Table with columns: 1705-1835 (left), 2-52 (middle), 1710-1835 (right). Lists house numbers for Frederick Place.

Fremont Street

Table with columns: 1705-1835 (left), 2-52 (middle), 1710-1835 (right). Lists house numbers for Fremont Street.

Odd Nos. New Old

Table with columns: Odd Nos. New, Old, Even Nos. New, Old. Lists house numbers for Odd Nos. street.

Franklin Boulevard

Table with columns: Even Nos. New, Old, Odd Nos. New, Old. Lists house numbers for Franklin Boulevard.

Even Cont

Frederick Place

Table with columns: 1705-1835 (left), 2-52 (middle), 1710-1835 (right). Lists house numbers for Frederick Place.

Fremont Street

Table with columns: 1705-1835 (left), 2-52 (middle), 1710-1835 (right). Lists house numbers for Fremont Street.

Odd Nos. New Old

Table with columns: Odd Nos. New, Old, Even Nos. New, Old. Lists house numbers for Odd Nos. street.

Franklin Boulevard

Table with columns: Even Nos. New, Old, Odd Nos. New, Old. Lists house numbers for Franklin Boulevard.

Even Cont

Frederick Place

Table with columns: 1705-1835 (left), 2-52 (middle), 1710-1835 (right). Lists house numbers for Frederick Place.

Fremont Street

Table with columns: 1705-1835 (left), 2-52 (middle), 1710-1835 (right). Lists house numbers for Fremont Street.

Fry Street

Table with columns: 1205-1225 (left), 5-21 (middle), 1214-1234 (right). Lists house numbers for Fry Street.

Fuller Street

Table with columns: 1371-1465 (left), 49-183 (middle), 1302-1574 (right). Lists house numbers for Fuller Street.

Fullerton Avenue

Table with columns: 357-607 (left), 801-865 (middle), 430-746 (right). Lists house numbers for Fullerton Avenue.

Cont'd 1st col

Fullerton Avenue

CONTINUED

Table with multiple columns for house numbers and status (New/Old). Includes sections for Fullerton Avenue, Even Cont, and Fulton St. Contains numerous rows of numerical data and street names.

Fulton Street CONTINUED

Table with columns: Odd Nos., Even Nos., New, Old. Lists house numbers for Fulton Street.

Table with columns: Odd Nos., Even Nos., New, Old. Lists house numbers for Fulton Street.

Table with columns: Even Nos., Odd Nos., New, Old. Lists house numbers for Fulton Street.

Table with columns: Odd Nos., Even Nos., New, Old. Lists house numbers for Fulton Street.

Table with columns: Even Nos., Odd Nos., New, Old. Lists house numbers for Fulton Street.

Table with columns: Odd Nos., Even Nos., New, Old. Lists house numbers for Fulton Street.

Table with columns: Even Nos., Odd Nos., New, Old. Lists house numbers for Fulton Street.

Table with columns: Odd Nos., Even Nos., New, Old. Lists house numbers for Fulton Street.

Table with columns: Even Nos., Odd Nos., New, Old. Lists house numbers for Fulton Street.

Table with columns: Odd Nos., Even Nos., New, Old. Lists house numbers for Fulton Street.

Gage Place

Table with columns: Even Nos., Odd Nos., New, Old. Lists house numbers for Gage Place.

Galt Avenue

Table with columns: Even Nos., Odd Nos., New, Old. Lists house numbers for Galt Avenue.

Gardner Street

Table with columns: Even Nos., Odd Nos., New, Old. Lists house numbers for Gardner Street.

Garfield Avenue

Table with columns: Even Nos., Odd Nos., New, Old. Lists house numbers for Garfield Avenue.

Even Cont

Table with columns: Even Nos., Odd Nos., New, Old. Lists house numbers for Garfield Avenue.

East Garfield Blvd.

Table with columns: Even Nos., Odd Nos., New, Old. Lists house numbers for East Garfield Blvd.

Table with columns: Odd Nos., Even Nos., New, Old. Lists house numbers for West Garfield Blvd.

Table with columns: Even Nos., Odd Nos., New, Old. Lists house numbers for West Garfield Blvd.

Table with columns: Odd Nos., Even Nos., New, Old. Lists house numbers for West Garfield Blvd.

W. Garfield Blvd. CONTINUED

Table with columns for Odd Nos. New Old and Even Nos. New Old. Lists house numbers for W. Garfield Blvd. from 745 to 1443.

Odd Cont

Table with columns for Odd Nos. New Old and Even Nos. New Old. Lists house numbers for Odd Cont from 1457 to 2011.

Odd Nos. New Old

Table with columns for Odd Nos. New Old and Even Nos. New Old. Lists house numbers for Odd Nos. from 857 to 2011.

Even Nos. New Old

Table with columns for Even Nos. New Old and Odd Nos. New Old. Lists house numbers for Even Nos. from 870 to 2011.

Odd Nos. New Old

Table with columns for Odd Nos. New Old and Even Nos. New Old. Lists house numbers for Odd Nos. from 3651 to 844w.

Even Nos. New Old

Table with columns for Even Nos. New Old and Odd Nos. New Old. Lists house numbers for Even Nos. from 3806 to 935w.

George Court

Table with columns for Odd Nos. New Old and Even Nos. New Old. Lists house numbers for George Court from 3750 to 915.

Germania Place

Table with columns for Odd Nos. New Old and Even Nos. New Old. Lists house numbers for Germania Place from 113 to 326.

Giddings Street

Table with columns for Odd Nos. New Old and Even Nos. New Old. Lists house numbers for Giddings Street from 2003 to 2286.

Odd Nos. New Old

Table with columns for Odd Nos. New Old and Even Nos. New Old. Lists house numbers for Odd Nos. from 2413 to 2200.

Gladys Avenue

Table with columns for Odd Nos. New Old and Even Nos. New Old. Lists house numbers for Gladys Avenue from 2413 to 2200.

Gilbert Place

Table with columns for Odd Nos. New Old and Even Nos. New Old. Lists house numbers for Gilbert Place from 2643 to 13.

Gilpin Place

Table with columns for Odd Nos. New Old and Even Nos. New Old. Lists house numbers for Gilpin Place from 2643 to 108.

Girard Street

Table with columns for Odd Nos. New Old and Even Nos. New Old. Lists house numbers for Girard Street from 1541 to 857.

Odd Cont

Table with columns for Odd Nos. New Old and Even Nos. New Old. Lists house numbers for Odd Cont from 2615 to 235.

Garfield Court

Table with columns for Odd Nos. New Old and Even Nos. New Old. Lists house numbers for Garfield Court from 1415 to 1441.

George Street

Table with columns for Odd Nos. New Old and Even Nos. New Old. Lists house numbers for George Street from 817 to 839.

Gary Place

Table with columns for Odd Nos. New Old and Even Nos. New Old. Lists house numbers for Gary Place from 611 to 627.

Gault Court

Table with columns for Odd Nos. New Old and Even Nos. New Old. Lists house numbers for Gault Court from 811 to 865.

Geary Street

Table with columns for Odd Nos. New Old and Even Nos. New Old. Lists house numbers for Geary Street from 872 to 916.

George Street

Table with columns for Odd Nos. New Old and Even Nos. New Old. Lists house numbers for George Street from 800 to 3045.

872 2

Table with columns for Odd Nos. New Old and Even Nos. New Old. Lists house numbers from 872 to 916.

817 16w

Table with columns for Odd Nos. New Old and Even Nos. New Old. Lists house numbers from 817 to 839.

N.F. av

Table with columns for Odd Nos. New Old and Even Nos. New Old. Lists house numbers for N.F. av from 3034 to 931w.

Greenleaf Avenue

Table with columns: New, Old, Even Nos., New Old. Rows 1701-2329.

Greenwich Street

Table with columns: New, Old, Even Nos., New Old. Rows 1701-4817.

Greenwood Terrace

Table with columns: New, Old, Even Nos., New Old. Rows 815-1557.

Greshaw Street

Table with columns: New, Old, Even Nos., New Old. Rows 2315-3428.

Gross Street

Table with columns: New, Old, Even Nos., New Old. Rows 3430-3842.

Gross Terrace

Table with columns: New, Old, Even Nos., New Old. Rows 13-45.

Grove Place

Table with columns: New, Old, Even Nos., New Old. Rows 613-601.

Groveiand Park

Table with columns: New, Old, Even Nos., New Old. Rows 601-4528.

Guernsey Avenue

Table with columns: New, Old, Even Nos., New Old. Rows 2945-4961.

Gunnison Street

Table with columns: New, Old, Even Nos., New Old. Rows 4843-5145.

Haddon Avenue

Table with columns: New, Old, Even Nos., New Old. Rows 2950-1600.

Odd Cont. 2753 764, 2755 766, 2757 768, 4207 1768, 4229 1790, 4333 1862, 4339 1868

NEW AND OLD HOUSE NUMBERS

South Halsted St.

Table with columns: Odd Nos., Even Nos., New Old, and a list of house numbers from 333 to 1150.

Table with columns: Odd Nos., Even Nos., New Old, and a list of house numbers from 1225 to 1150.

Table with columns: Even Nos., Odd Nos., New Old, and a list of house numbers from 1212 to 1918.

Table with columns: Odd Nos., Even Nos., New Old, and a list of house numbers from 2033 to 1788.

Table with columns: Even Nos., Odd Nos., New Old, and a list of house numbers from 1920 to 3032.

Table with columns: Odd Nos., Even Nos., New Old, and a list of house numbers from 3823 to 2249.

Table with columns: Even Nos., Odd Nos., New Old, and a list of house numbers from 3034 to 1110.

Table with columns: Odd Nos., Even Nos., New Old, and a list of house numbers from 2251 to 1110.

Table with columns: Even Nos., Odd Nos., New Old, and a list of house numbers from 2252 to 1110.

Table with columns: Even Nos., Odd Nos., New Old, and a list of house numbers from 2252 to 1110.

North Hamlin Av.

Table with columns: Even Nos., Odd Nos., New Old, and a list of house numbers from 425 to 1110.

Hamburg Street

Table with columns: Even Nos., Odd Nos., New Old, and a list of house numbers from 2013 to 1788.

South Hamilton Av.

Table with columns: Even Nos., Odd Nos., New Old, and a list of house numbers from 111 to 1110.

North Hamilton Av.

Table with columns: Even Nos., Odd Nos., New Old, and a list of house numbers from 2313 to 1788.

Hamilton Court

Table with columns: Even Nos., Odd Nos., New Old, and a list of house numbers from 2201 to 788.

Table with columns for street names (North Hamlin Av., Hampden Court, Hancock Street, South Hamlin Av., North Harding Av., Hammond Street) and rows for house numbers (New, Old). Includes sub-headers like 'CONTINUED' and 'Even Cont'.

North Harding Av.

Table with 3 columns: New, Old, Even. Rows include 4620 2835 3722 2257, 4624 2839 3728 2267, 4630 2845 3832 2355, etc.

South Harding Av.

Table with 3 columns: New, Old, Even. Rows include 1213 538 1218 543, 1217 542 1220 545, 1219 544 1222 547, etc.

West Harrison St.

Table with 3 columns: New, Old, Even. Rows include 3017 1404 3024 1471, 3023 1468 3028 1473, 3123 1534 3133 1544, etc.

Even New Old

Table with 3 columns: New, Old, Even. Rows include 3024 1471 3028 1473, 3030 1475 3032 1477, 3034 1481 3038 1483, etc.

Odd New Old

Table with 3 columns: New, Old, Even. Rows include 1151 430 1153 432, 1155 434 1157 436, 1161 438 1163 440, etc.

Even New Old

Table with 3 columns: New, Old, Even. Rows include 1358 555 1400 565, 1402 567 1406 569, 1408 571, etc.

Odd New Old

Table with 3 columns: New, Old, Even. Rows include 2131 978 2133 982, 2135 984 2137 986, 2139 990, etc.

Even New Old

Table with 3 columns: New, Old, Even. Rows include 2116 963 2118 965, 2120 969 2124 971, 2126 973, etc.

Odd New Old

Table with 3 columns: New, Old, Even. Rows include 2851 1430 2853 1432, 2855 1436 2857 1438, 2901 1440, etc.

Even New Old

Table with 3 columns: New, Old, Even. Rows include 2903 1442 2905 1444, 2907 1446 2911 1450, 2915 1454, etc.

Odd New Old

Table with 3 columns: New, Old, Even. Rows include 3006 1507 3008 1509, 3012 1511 3016 1515, 3018 1519, etc.

Table with 3 columns: New, Old, Even. Rows include 3024 1527 3028 1529, 3030 1531 3034 1535, 3038 1539, etc.

Table with multiple columns and rows listing house numbers. Columns include 'Hein Place', 'Henderson Street', 'Henry Court', 'No. Hermitage Av.', and 'Herdon Street'. Each entry consists of 'New' and 'Old' house numbers. Includes sub-sections like 'Continued', 'Even Cont', and 'Odd Cont'.

Main table with columns for street names (Herndon, Hill, Hirsch, Hobbie, Hollywood, High, Hervey) and house numbers (New/Old). Includes sub-headers like 'CONTINUED' and 'Even Cont'.

NEW AND OLD HOUSE NUMBERS

Hudson Avenue CONTINUED

Table with columns: Odd Nos., Even Nos., New, Old. Lists house numbers for Hudson Avenue from 1425 to 913.

Odd Nos. Even Nos. New Old

Table with columns: Odd Nos., Even Nos., New, Old. Lists house numbers for Hudson Avenue from 917 to 2443.

Odd Nos. Even Nos. New Old

Table with columns: Odd Nos., Even Nos., New, Old. Lists house numbers for Hudson Avenue from 2447 to 3749.

Odd Nos. Even Nos. New Old

Table with columns: Odd Nos., Even Nos., New, Old. Lists house numbers for Hudson Avenue from 3753 to 4347.

Even Nos. Odd Nos. New Old

Table with columns: Even Nos., Odd Nos., New, Old. Lists house numbers for Hudson Avenue from 4351 to 5712.

Humboldt Blvd.

Table with columns: Even Nos., Odd Nos., New, Old. Lists house numbers for Humboldt Blvd. from 1618 to 1820.

Humboldt Avenue

Table with columns: Even Nos., Odd Nos., New, Old. Lists house numbers for Humboldt Avenue from 1903 to 2026.

East Huron Street

Table with columns: Even Nos., Odd Nos., New, Old. Lists house numbers for East Huron Street from 2029 to 2334.

North Humboldt Av

Table with columns: Even Nos., Odd Nos., New, Old. Lists house numbers for North Humboldt Av from 2509 to 3743.

West Huron Street

Table with columns: Even Nos., Odd Nos., New, Old. Lists house numbers for West Huron Street from 2334 to 2508.

North Irving Blvd.

CONTINUED

Table with columns: Odd Nos., Even Nos., New, Old. Lists house numbers for North Irving Blvd. from 3849 down to 439.

Table with columns: Odd Nos., Even Nos., New, Old. Lists house numbers for Irving Park Blvd. from 441 down to 1933.

Table with columns: Odd Nos., Even Nos., New, Old. Lists house numbers for Irving Park Blvd. from 1935 down to 2588.

Table with columns: Odd Nos., Even Nos., New, Old. Lists house numbers for West Jackson Blvd. from 2626 down to 2760.

Table with columns: Odd Nos., Even Nos., New, Old. Lists house numbers for West Jackson Blvd. from 2762 down to 3174.

South Irving Av.

Table with columns: Odd Nos., Even Nos., New, Old. Lists house numbers for South Irving Av. from 117 down to 439.

Table with columns: Odd Nos., Even Nos., New, Old. Lists house numbers for South Irving Av. from 119 down to 1933.

Table with columns: Odd Nos., Even Nos., New, Old. Lists house numbers for South Irving Av. from 117 down to 2588.

Table with columns: Odd Nos., Even Nos., New, Old. Lists house numbers for South Irving Av. from 117 down to 3174.

Table with columns: Odd Nos., Even Nos., New, Old. Lists house numbers for South Irving Av. from 117 down to 3174.

West Jackson Blvd. CONTINUED

Table with 3 columns: Odd New, Old, Even New, Old. Lists house numbers from 1849 to 2457.

Table with 3 columns: Odd New, Old, Even New, Old. Lists house numbers from 2515 to 3315.

Table with 3 columns: Even New, Old, Odd New, Old. Lists house numbers from 2354 to 3324.

Table with 3 columns: Odd New, Old, Even New, Old. Lists house numbers from 3034 to 4350.

Table with 3 columns: Even New, Old, Odd New, Old. Lists house numbers from 3818 to 4350.

Table with 3 columns: Odd New, Old, Even New, Old. Lists house numbers from 4339 to 5424.

Table with 3 columns: Even New, Old, Odd New, Old. Lists house numbers from 4400 to 5424.

Table with 3 columns: Odd New, Old, Even New, Old. Lists house numbers from 3621 to 3000.

Table with 3 columns: Even New, Old, Odd New, Old. Lists house numbers from 3538 to 3000.

Even Cont

Jackson Pk. Terrace

Table with 3 columns: Odd New, Old, Even New, Old. Lists house numbers from 1439 to 1543.

North Jefferson St.

Table with 3 columns: Odd New, Old, Even New, Old. Lists house numbers from 3911 to 4907.

West Jackson St.

Table with 3 columns: Odd New, Old, Even New, Old. Lists house numbers from 3819 to 4202.

Jackson Place

Table with 3 columns: Odd New, Old, Even New, Old. Lists house numbers from 2115 to 2128.

James Street

Table with 3 columns: Odd New, Old, Even New, Old. Lists house numbers from 2015 to 2053.

Janssen Avenue

Table with 3 columns: Odd New, Old, Even New, Old. Lists house numbers from 3407 to 3422.

South Jefferson St.

Table with 3 columns: Odd New, Old, Even New, Old. Lists house numbers from 3418 to 3000.

Cont'd 1st col

Table with columns: South Jefferson St., CONTINUED, New Old, New Old, New Old. Includes house numbers and their corresponding new/old status.

Table with columns: Odd Nos., New Old, Even Cont, New Old, Even Cont. Includes house numbers and their corresponding new/old status.

Table with columns: Even Nos., New Old, Johnson Street, New Old, Johnson Street. Includes house numbers and their corresponding new/old status.

Table with columns: Odd Nos., New Old, Johnson Street, New Old, Johnson Street. Includes house numbers and their corresponding new/old status.

Table with columns: Even Nos., New Old, Johnson Street, New Old, Johnson Street. Includes house numbers and their corresponding new/old status.

Table with columns: Odd Nos., New Old, Johnson Street, New Old, Johnson Street. Includes house numbers and their corresponding new/old status.

Table with columns: Even Nos., New Old, Johnson Street, New Old, Johnson Street. Includes house numbers and their corresponding new/old status.

Table with columns: Kammerling Av., New Old, Even New Old, New Old, Even New Old. Includes house numbers and their corresponding new/old status.

Table with columns: North Kездie Av., New Old, Even New Old, New Old, Even New Old. Includes house numbers and their corresponding new/old status.

Jones Street

Judson Street

Julia Court

Julian Street

Johnston Ave.

Julius Street

Junior Terrace

North Kездie Av.

Table with columns: Odd Nos. New, Even Nos. New, Odd Nos. Old, Even Nos. Old. Rows 1839-3535.

Odd Nos. New, Even Nos. New, Odd Nos. Old, Even Nos. Old

Table with columns: Odd Nos. New, Even Nos. New, Odd Nos. Old, Even Nos. Old. Rows 3339-4444.

Even Nos. New, Odd Nos. Old, Even Nos. Old

Table with columns: Even Nos. New, Odd Nos. Old, Even Nos. Old. Rows 3723-6114.

Odd Nos. New, Even Nos. New, Odd Nos. Old, Even Nos. Old

Table with columns: Odd Nos. New, Even Nos. New, Odd Nos. Old, Even Nos. Old. Rows 1521-2888.

Even Nos. New, Odd Nos. Old, Even Nos. Old

Table with columns: Even Nos. New, Odd Nos. Old, Even Nos. Old. Rows 1718-2888.

Odd Nos. New, Even Nos. New, Odd Nos. Old, Even Nos. Old

Table with columns: Odd Nos. New, Even Nos. New, Odd Nos. Old, Even Nos. Old. Rows 2539-3059.

Even Nos. New, Odd Nos. Old, Even Nos. Old

Table with columns: Even Nos. New, Odd Nos. Old, Even Nos. Old. Rows 2729-3059.

Kenesaw Terrace

Table with columns: Odd Nos. New, Even Nos. New, Odd Nos. Old, Even Nos. Old. Rows 713-840.

Kenilworth Avenue

Table with columns: Odd Nos. New, Even Nos. New, Odd Nos. Old, Even Nos. Old. Rows 1407-1618.

South Kездie Av.

Table with columns: Odd Nos. New, Even Nos. New, Odd Nos. Old, Even Nos. Old. Rows 23-444.

Even Nos. New, Odd Nos. Old, Even Nos. Old

Table with columns: Even Nos. New, Odd Nos. Old, Even Nos. Old. Rows 14-107.

Odd Nos. New, Even Nos. New, Odd Nos. Old, Even Nos. Old

Table with columns: Odd Nos. New, Even Nos. New, Odd Nos. Old, Even Nos. Old. Rows 1843-2888.

Even Nos. New, Odd Nos. Old, Even Nos. Old

Table with columns: Even Nos. New, Odd Nos. Old, Even Nos. Old. Rows 1843-2888.

Odd Nos. New, Even Nos. New, Odd Nos. Old, Even Nos. Old

Table with columns: Odd Nos. New, Even Nos. New, Odd Nos. Old, Even Nos. Old. Rows 1613-1747.

Even Nos. New, Odd Nos. Old, Even Nos. Old

Table with columns: Even Nos. New, Odd Nos. Old, Even Nos. Old. Rows 1608-1747.

Keonon Street

Table with columns: Odd Nos. New, Even Nos. New, Odd Nos. Old, Even Nos. Old. Rows 1613-1747.

Keith Street

Table with columns: Odd Nos. New, Even Nos. New, Odd Nos. Old, Even Nos. Old. Rows 711-747.

Kemper Place

Table with columns: Odd Nos. New, Even Nos. New, Odd Nos. Old, Even Nos. Old. Rows 631-645.

Kendall Street

Table with columns: Odd Nos. New, Even Nos. New, Odd Nos. Old, Even Nos. Old. Rows 2013-2888.

Kenmore Avenue

Table with columns: Odd Nos. New, Even Nos. New, Odd Nos. Old, Even Nos. Old. Rows 4007-4028.

Odd Cont

Table with columns: Odd Nos. New, Even Nos. New, Odd Nos. Old, Even Nos. Old. Rows 2715-2723.

NEW AND OLD HOUSE NUMBERS

Table with multiple columns for street names (Kenmore Avenue, Kensington Avenue, Kenwood Terrace, Kies Place, Kimball Avenue) and corresponding house numbers in 'New' and 'Old' columns. Includes 'Even Cont' and 'King Place' sections.

NEW AND OLD HOUSE NUMBERS

Lakewood Avenue

Table with columns: Odd Nos., Even Nos., Odd Nos., Even Nos., Odd Nos., Even Nos., Odd Nos., Even Nos. Rows include house numbers and their corresponding street addresses.

Continued

Continuation of the Lakewood Avenue table, listing house numbers and addresses.

Larretta Court

Table for Larretta Court with columns: Even Nos., Odd Nos., Even Nos., Odd Nos., Even Nos., Odd Nos., Even Nos., Odd Nos.

Lasalle Avenue

Table for Lasalle Avenue with columns: Even Nos., Odd Nos., Even Nos., Odd Nos., Even Nos., Odd Nos., Even Nos., Odd Nos.

Lane Court

Table for Lane Court with columns: Even Nos., Odd Nos., Even Nos., Odd Nos., Even Nos., Odd Nos., Even Nos., Odd Nos.

Langdon Street

Table for Langdon Street with columns: Even Nos., Odd Nos., Even Nos., Odd Nos., Even Nos., Odd Nos., Even Nos., Odd Nos.

Larchmont Avenue

Table for Larchmont Avenue with columns: Even Nos., Odd Nos., Even Nos., Odd Nos., Even Nos., Odd Nos., Even Nos., Odd Nos.

Larrabee Street

Table for Larrabee Street with columns: Even Nos., Odd Nos., Even Nos., Odd Nos., Even Nos., Odd Nos., Even Nos., Odd Nos.

Larretta Court

Table for Larretta Court with columns: Even Nos., Odd Nos., Even Nos., Odd Nos., Even Nos., Odd Nos., Even Nos., Odd Nos.

Lasalle Avenue

Table for Lasalle Avenue with columns: Even Nos., Odd Nos., Even Nos., Odd Nos., Even Nos., Odd Nos., Even Nos., Odd Nos.

Final column of house numbers and addresses, continuing the list from the previous tables.

Lasalle Avenue CONTINUED

Table with columns: Odd New, Odd Old, Even New, Even Old. Rows 1545-1649.

Odd New, Odd Old

Table with columns: Odd New, Odd Old. Rows 539-866.

Even New, Even Old

Table with columns: Even New, Even Old. Rows 718-1708.

Odd New, Odd Old

Table with columns: Odd New, Odd Old. Rows 2200-4241.

Even New, Even Old

Table with columns: Even New, Even Old. Rows 4305-4345.

Odd New, Odd Old

Table with columns: Odd New, Odd Old. Rows 2507-2545.

North Laurel Av.

Table with columns: Odd New, Odd Old, Even New, Even Old. Rows 613-857.

Odd New, Odd Old

Table with columns: Odd New, Odd Old. Rows 801-1256.

Even New, Even Old

Table with columns: Even New, Even Old. Rows 901-1745.

Odd New, Odd Old

Table with columns: Odd New, Odd Old. Rows 2200-4241.

Even New, Even Old

Table with columns: Even New, Even Old. Rows 4305-4345.

Odd New, Odd Old

Table with columns: Odd New, Odd Old. Rows 2507-2545.

Law Avenue

Table with columns: Odd New, Odd Old, Even New, Even Old. Rows 527-739.

Odd New, Odd Old

Table with columns: Odd New, Odd Old. Rows 539-866.

Even New, Even Old

Table with columns: Even New, Even Old. Rows 718-1708.

Odd New, Odd Old

Table with columns: Odd New, Odd Old. Rows 2200-4241.

Even New, Even Old

Table with columns: Even New, Even Old. Rows 4305-4345.

Odd New, Odd Old

Table with columns: Odd New, Odd Old. Rows 2507-2545.

North Lawndale Av.

Table with columns: Odd New, Odd Old, Even New, Even Old. Rows 415-537.

Odd New, Odd Old

Table with columns: Odd New, Odd Old. Rows 801-1256.

Even New, Even Old

Table with columns: Even New, Even Old. Rows 901-1745.

Odd New, Odd Old

Table with columns: Odd New, Odd Old. Rows 2200-4241.

Even New, Even Old

Table with columns: Even New, Even Old. Rows 4305-4345.

Odd New, Odd Old

Table with columns: Odd New, Odd Old. Rows 2507-2545.

South Lawndale Av.

Table with columns: Odd New, Odd Old, Even New, Even Old. Rows 519-4245.

Even New, Even Old

Table with columns: Even New, Even Old. Rows 4305-4345.

Odd New, Odd Old

Table with columns: Odd New, Odd Old. Rows 2507-2545.

Odd Cont

Table with columns: Odd New, Odd Old. Rows 3141-3221.

Lawrence Street

Table with columns: Odd New, Odd Old. Rows 1431-1441.

Lawrence Avenue

Table with columns: Odd New, Odd Old. Rows 911-1061.

Odd Cont

Table with columns: Odd New, Odd Old. Rows 4245-4255.

Lawrence Avenue CONTINUED

Table with columns: Odd New, Odd Old, Even New, Even Old. Rows include house numbers from 1237 to 2211w.

North Leavitt St.

Table with columns: Odd New, Odd Old, Even New, Even Old. Rows include house numbers from 9 to 1235.

Table with columns: Odd New, Odd Old, Even New, Even Old. Rows include house numbers from 1222 to 2012.

Table with columns: Odd New, Odd Old, Even New, Even Old. Rows include house numbers from 2014 to 3432.

Table with columns: Even New, Even Old, Odd New, Odd Old. Rows include house numbers from 3432 to 3022.

Lee Place

Table with columns: Even New, Even Old, Odd New, Odd Old. Rows include house numbers from 2000 to 2008.

Table with columns for street names and house numbers. Streets listed include Lee Place, Lehman Court, Leland Avenue, Le Moyne Street, Lessing Street, Levee Street, Lewis Avenue, and Lewis Street. Each street listing includes 'New' and 'Old' house numbers and their corresponding 'Even' and 'Odd' numbers.

NEW AND OLD HOUSE NUMBERS

Lexington Street

Table with columns: Odd New, Even New, Odd Old, Even Old. Rows list house numbers from 3511 to 5647.

Continued

Continuation of Lexington Street table with columns: Odd New, Even New, Odd Old, Even Old. Rows list house numbers from 639 to 180.

Lill Avenue

Table with columns: Odd New, Even New, Odd Old, Even Old. Rows list house numbers from 815 to 1445.

Even Nos.

Table with columns: New, Old. Rows list even house numbers from 644 to 1444.

Odd Nos.

Table with columns: New, Old. Rows list odd house numbers from 835 to 1443.

Even Nos.

Table with columns: New, Old. Rows list even house numbers from 420 to 1328.

Odd Nos.

Table with columns: New, Old. Rows list odd house numbers from 117 to 1327.

Even Nos.

Table with columns: New, Old. Rows list even house numbers from 1330 to 2814.

Odd Nos.

Table with columns: New, Old. Rows list odd house numbers from 629 to 2815.

Even Nos.

Table with columns: New, Old. Rows list even house numbers from 3042 to 3714.

Even Cont

Table with columns: New, Old. Rows list even house numbers from 4046 to 6106.

Cont'd 1st col

Table with columns: New, Old. Rows list even house numbers from 4046 to 4554.

South Lincoln St.

Table with columns: New, Old. Rows list house numbers from 15 to 2301.

Liberty Street

Table with columns: Odd New, Even New, Odd Old, Even Old. Rows list house numbers from 511 to 637.

North Lincoln St.

Table with columns: New, Old. Rows list house numbers from 12 to 745.

Even Nos.

Table with columns: New, Old. Rows list even house numbers from 12 to 418.

Odd Nos.

Table with columns: New, Old. Rows list odd house numbers from 13 to 745.

Even Nos.

Table with columns: New, Old. Rows list even house numbers from 12 to 1328.

Odd Nos.

Table with columns: New, Old. Rows list odd house numbers from 13 to 1327.

Even Nos.

Table with columns: New, Old. Rows list even house numbers from 1330 to 2814.

Odd Nos.

Table with columns: New, Old. Rows list odd house numbers from 629 to 2815.

Even Nos.

Table with columns: New, Old. Rows list even house numbers from 3042 to 3714.

South Lincoln St. CONTINUED

Table with columns: Odd New, Even New, Odd Old, Even Old. Rows include house numbers 2307-2437 and Even Cont.

Odd New, Even New, Odd Old, Even Old

Table with columns: Odd New, Even New, Odd Old, Even Old. Rows include house numbers 2233-2415.

Even Nos. New, Odd Nos. New, Even Nos. Old, Odd Nos. Old

Table with columns: Even Nos. New, Odd Nos. New, Even Nos. Old, Odd Nos. Old. Rows include house numbers 2158-2230.

Even Nos. New, Odd Nos. New, Even Nos. Old, Odd Nos. Old

Table with columns: Even Nos. New, Odd Nos. New, Even Nos. Old, Odd Nos. Old. Rows include house numbers 2255-2327.

Even Nos. New, Odd Nos. New, Even Nos. Old, Odd Nos. Old

Table with columns: Even Nos. New, Odd Nos. New, Even Nos. Old, Odd Nos. Old. Rows include house numbers 2428-2500.

Even Nos. New, Odd Nos. New, Even Nos. Old, Odd Nos. Old

Table with columns: Even Nos. New, Odd Nos. New, Even Nos. Old, Odd Nos. Old. Rows include house numbers 3114-3186.

Even Nos. New, Odd Nos. New, Even Nos. Old, Odd Nos. Old

Table with columns: Even Nos. New, Odd Nos. New, Even Nos. Old, Odd Nos. Old. Rows include house numbers 3114-3186.

Even Nos. New, Odd Nos. New, Even Nos. Old, Odd Nos. Old

Table with columns: Even Nos. New, Odd Nos. New, Even Nos. Old, Odd Nos. Old. Rows include house numbers 4012-4084.

Cont'd 1st col

Lincoln Avenue

Table with columns: A, B, C, D, E, F, G, H, I, J, K, L, M, N, O, P, Q, R, S, T, U, V, W, X, Y, Z. Rows include house numbers 1835-2031.

Table with columns: A, B, C, D, E, F, G, H, I, J, K, L, M, N, O, P, Q, R, S, T, U, V, W, X, Y, Z. Rows include house numbers 1800-1974.

Table with columns: A, B, C, D, E, F, G, H, I, J, K, L, M, N, O, P, Q, R, S, T, U, V, W, X, Y, Z. Rows include house numbers 1800-1974.

Table with columns: A, B, C, D, E, F, G, H, I, J, K, L, M, N, O, P, Q, R, S, T, U, V, W, X, Y, Z. Rows include house numbers 1800-1974.

Table with columns: A, B, C, D, E, F, G, H, I, J, K, L, M, N, O, P, Q, R, S, T, U, V, W, X, Y, Z. Rows include house numbers 1800-1974.

Table with columns: A, B, C, D, E, F, G, H, I, J, K, L, M, N, O, P, Q, R, S, T, U, V, W, X, Y, Z. Rows include house numbers 1800-1974.

Table with columns: A, B, C, D, E, F, G, H, I, J, K, L, M, N, O, P, Q, R, S, T, U, V, W, X, Y, Z. Rows include house numbers 1800-1974.

Table with columns: A, B, C, D, E, F, G, H, I, J, K, L, M, N, O, P, Q, R, S, T, U, V, W, X, Y, Z. Rows include house numbers 1800-1974.

Table with columns: A, B, C, D, E, F, G, H, I, J, K, L, M, N, O, P, Q, R, S, T, U, V, W, X, Y, Z. Rows include house numbers 2033-2229.

Table with columns: A, B, C, D, E, F, G, H, I, J, K, L, M, N, O, P, Q, R, S, T, U, V, W, X, Y, Z. Rows include house numbers 1800-1974.

Table with columns: A, B, C, D, E, F, G, H, I, J, K, L, M, N, O, P, Q, R, S, T, U, V, W, X, Y, Z. Rows include house numbers 1800-1974.

Table with columns: A, B, C, D, E, F, G, H, I, J, K, L, M, N, O, P, Q, R, S, T, U, V, W, X, Y, Z. Rows include house numbers 1800-1974.

Table with columns: A, B, C, D, E, F, G, H, I, J, K, L, M, N, O, P, Q, R, S, T, U, V, W, X, Y, Z. Rows include house numbers 1800-1974.

Table with columns: A, B, C, D, E, F, G, H, I, J, K, L, M, N, O, P, Q, R, S, T, U, V, W, X, Y, Z. Rows include house numbers 1800-1974.

Table with columns: A, B, C, D, E, F, G, H, I, J, K, L, M, N, O, P, Q, R, S, T, U, V, W, X, Y, Z. Rows include house numbers 1800-1974.

Table with columns: A, B, C, D, E, F, G, H, I, J, K, L, M, N, O, P, Q, R, S, T, U, V, W, X, Y, Z. Rows include house numbers 1800-1974.

Even Cont

Lincoln Park Blvd.

Table with columns: A, B, C, D, E, F, G, H, I, J, K, L, M, N, O, P, Q, R, S, T, U, V, W, X, Y, Z. Rows include house numbers 443-442.

Cont'd 1st col

Lincoln Park Blvd.

Table with columns: Odd Nos., Even Nos., New, Old. Rows include numbers 2337, 2339, 100, 2349, 110, 615, 71, 700, 110, etc.

Lincoln Pl. (N. D.)

Table with columns: Odd Nos., Even Nos., New, Old. Rows include numbers 2100, 7, 2100, 2, 2111, 11, 2104, 6, etc.

Lincoln Pl. (N. P.)

Table with columns: Odd Nos., Even Nos., New, Old. Rows include numbers 6219, 200, 6234, 219, 6225, 206, 6246, 225, etc.

Linden Avenue

Table with columns: Odd Nos., Even Nos., New, Old. Rows include numbers 4401, 2072, 4446, 2121, 4409, 2080, 4450, 2133, etc.

Linden Court

Table with columns: Odd Nos., Even Nos., New, Old. Rows include numbers 2817, 18, 2814, 15, 2819, 20, 2822, 21, etc.

Linden Place

Table with columns: Odd Nos., Even Nos., New, Old. Rows include numbers 2416, 20, 427, 157, 2504, 82, 481, 159, etc.

Lister Avenue

Table with columns: Odd Nos., Even Nos., New, Old. Rows include numbers 2206, 8, 2300, 63, 2211, 16, 2102, 65, 2213, 14, 2306, 69, etc.

Odd Nos. New Old

Table with columns: Odd Nos., New, Old. Rows include numbers 2337, 98, 2339, 100, 2349, 110, etc.

Even Nos. New Old

Table with columns: Even Nos., New, Old. Rows include numbers 119, 170, 120, 167, 122, 165, etc.

Lucust Street

Table with columns: Odd Nos., Even Nos., New, Old. Rows include numbers 119, 170, 120, 167, 122, 165, etc.

Logan Square

Table with columns: Odd Nos., Even Nos., New, Old. Rows include numbers 2602, 1455, 2606, 1461, 2608, 1463, etc.

Loneragan Street

Table with columns: Odd Nos., Even Nos., New, Old. Rows include numbers 1912, 14, 1443, 535, 1842, 490, etc.

Loomis Street

Table with columns: Odd Nos., Even Nos., New, Old. Rows include numbers 11, 11, 10, 8, 13, 13, 12, 10, 17, 15, 14, 12, etc.

Even Nos. New Old

Table with columns: Even Nos., New, Old. Rows include numbers 120, 167, 122, 165, 126, 161, etc.

Odd Nos. New Old

Table with columns: Odd Nos., New, Old. Rows include numbers 821, 289, 823, 291, 825, 293, etc.

Even Nos. New Old

Table with columns: Even Nos., New, Old. Rows include numbers 120, 167, 122, 165, 126, 161, etc.

Lowell Avenue

Table with columns: Odd Nos., Even Nos., New, Old. Rows include numbers 718, 240, 730, 250, 732, 252, etc.

Lowell Court

Table with columns: Odd Nos., Even Nos., New, Old. Rows include numbers 807, 8, 808, 7, 812, 11, 814, 13, etc.

Odd Nos. New Old

Table with columns: Odd Nos., New, Old. Rows include numbers 821, 289, 823, 291, 825, 293, etc.

Even Nos. New Old

Table with columns: Even Nos., New, Old. Rows include numbers 120, 167, 122, 165, 126, 161, etc.

Lowell Avenue

Table with columns: Odd Nos., Even Nos., New, Old. Rows include numbers 718, 240, 730, 250, 732, 252, etc.

Lowell Court

Table with columns: Odd Nos., Even Nos., New, Old. Rows include numbers 807, 8, 808, 7, 812, 11, 814, 13, etc.

Even Nos. New Old

Table with columns: Even Nos., New, Old. Rows include numbers 120, 167, 122, 165, 126, 161, etc.

Odd Nos. New Old

Table with columns: Odd Nos., New, Old. Rows include numbers 821, 289, 823, 291, 825, 293, etc.

Even Nos. New Old

Table with columns: Even Nos., New, Old. Rows include numbers 120, 167, 122, 165, 126, 161, etc.

Lowell Avenue

Table with columns: Odd Nos., Even Nos., New, Old. Rows include numbers 718, 240, 730, 250, 732, 252, etc.

Lowell Court

Table with columns: Odd Nos., Even Nos., New, Old. Rows include numbers 807, 8, 808, 7, 812, 11, 814, 13, etc.

Odd Nos. New Old

Table with columns: Odd Nos., New, Old. Rows include numbers 821, 289, 823, 291, 825, 293, etc.

Even Nos. New Old

Table with columns: Even Nos., New, Old. Rows include numbers 120, 167, 122, 165, 126, 161, etc.

Lowell Avenue

Table with columns: Odd Nos., Even Nos., New, Old. Rows include numbers 718, 240, 730, 250, 732, 252, etc.

Lowell Court

Table with columns: Odd Nos., Even Nos., New, Old. Rows include numbers 807, 8, 808, 7, 812, 11, 814, 13, etc.

Even Nos. New Old

Table with columns: Even Nos., New, Old. Rows include numbers 120, 167, 122, 165, 126, 161, etc.

Odd Nos. New Old

Table with columns: Odd Nos., New, Old. Rows include numbers 821, 289, 823, 291, 825, 293, etc.

Even Nos. New Old

Table with columns: Even Nos., New, Old. Rows include numbers 120, 167, 122, 165, 126, 161, etc.

Lowell Avenue

Table with columns: Odd Nos., Even Nos., New, Old. Rows include numbers 718, 240, 730, 250, 732, 252, etc.

Lowell Court

Table with columns: Odd Nos., Even Nos., New, Old. Rows include numbers 807, 8, 808, 7, 812, 11, 814, 13, etc.

Odd Nos. New Old

Table with columns: Odd Nos., New, Old. Rows include numbers 821, 289, 823, 291, 825, 293, etc.

Even Nos. New Old

Table with columns: Even Nos., New, Old. Rows include numbers 120, 167, 122, 165, 126, 161, etc.

Lowell Avenue

Table with columns: Odd Nos., Even Nos., New, Old. Rows include numbers 718, 240, 730, 250, 732, 252, etc.

Lowell Court

Table with columns: Odd Nos., Even Nos., New, Old. Rows include numbers 807, 8, 808, 7, 812, 11, 814, 13, etc.

Odd Nos. New Old

Table with columns: Odd Nos., New, Old. Rows include numbers 821, 289, 823, 291, 825, 293, etc.

Even Nos. New Old

Table with columns: Even Nos., New, Old. Rows include numbers 120, 167, 122, 165, 126, 161, etc.

Lowell Avenue

Table with columns: Odd Nos., Even Nos., New, Old. Rows include numbers 718, 240, 730, 250, 732, 252, etc.

Lowell Court

Table with columns: Odd Nos., Even Nos., New, Old. Rows include numbers 807, 8, 808, 7, 812, 11, 814, 13, etc.

Odd Nos. New Old

Table with columns: Odd Nos., New, Old. Rows include numbers 821, 289, 823, 291, 825, 293, etc.

Even Nos. New Old

Table with columns: Even Nos., New, Old. Rows include numbers 120, 167, 122, 165, 126, 161, etc.

Lowell Avenue

Table with columns: Odd Nos., Even Nos., New, Old. Rows include numbers 718, 240, 730, 250, 732, 252, etc.

Lowell Court

Table with columns: Odd Nos., Even Nos., New, Old. Rows include numbers 807, 8, 808, 7, 812, 11, 814, 13, etc.

Luce Street

Table with columns: Odd Nos., Even Nos., New, Old. Rows include numbers 1411, 10, 1410, 9, 1413, 12, 1414, 11, etc.

Lull Place

Table with columns: Odd Nos., Even Nos., New, Old. Rows include numbers 1239, 56, 1240, 55, 1275, 20, 1728, 73, etc.

Lumber Street

Table with columns: Odd Nos., Even Nos., New, Old. Rows include numbers 1605, 1618, 838, 1617, 1620, 848, etc.

Lunt Avenue

Table with columns: Odd Nos., Even Nos., New, Old. Rows include numbers 1119, 1247, 1130, 1226, 1138, 1218, etc.

West Madison St.

Table with 2 columns: Odd Nos. New, Even Nos. Old. Lists house numbers from 1809 to 2333.

Table with 2 columns: Odd Nos. New, Even Nos. Old. Lists house numbers from 2335 to 3800.

Table with 2 columns: Even Nos. New, Odd Nos. Old. Lists house numbers from 3801 to 4050.

Table with 2 columns: Odd Nos. New, Even Nos. Old. Lists house numbers from 4051 to 4300.

Table with 2 columns: Even Nos. New, Odd Nos. Old. Lists house numbers from 4301 to 4600.

Table with 2 columns: Odd Nos. New, Even Nos. Old. Lists house numbers from 4601 to 4900.

Table with 2 columns: Even Nos. New, Odd Nos. Old. Lists house numbers from 4901 to 5200.

Table with 2 columns: Odd Nos. New, Even Nos. Old. Lists house numbers from 5201 to 5500.

Table with 2 columns: Even Nos. New, Odd Nos. Old. Lists house numbers from 5501 to 5800.

Even Cont

Madison Park

Cont'd 1st col

Madison Park

Magnolia Avenue

Large table containing 'Even Cont', 'Madison Park', and 'Magnolia Avenue' sections with multiple columns of house numbers.

No. Marshfield Av.

Table with columns: No. Marshfield Av. (New, Old), Odd Nos. (New, Old), Even Nos. (New, Old). Includes sub-section 'CONTINUED'.

Odd Nos.

Table with columns: Odd Nos. (New, Old), Even Nos. (New, Old).

Even Nos.

Table with columns: Even Nos. (New, Old), Odd Nos. (New, Old).

Odd Nos.

Table with columns: Odd Nos. (New, Old), Even Nos. (New, Old).

Even Nos.

Table with columns: Even Nos. (New, Old), Odd Nos. (New, Old).

Odd Nos.

Table with columns: Odd Nos. (New, Old), Even Nos. (New, Old).

Even Nos.

Table with columns: Even Nos. (New, Old), Odd Nos. (New, Old).

Odd Nos.

Table with columns: Odd Nos. (New, Old), Even Nos. (New, Old).

Even Nos.

Table with columns: Even Nos. (New, Old), Odd Nos. (New, Old).

Maxwell Street

Table with columns: Maxwell Street (New, Old), Odd Nos. (New, Old), Even Nos. (New, Old).

North May Street

Table with columns: North May Street (New, Old), Odd Nos. (New, Old), Even Nos. (New, Old).

Mather Street

Table with columns: Mather Street (New, Old), Odd Nos. (New, Old), Even Nos. (New, Old).

So. Marshfield Av.

Table with columns: So. Marshfield Av. (New, Old), Odd Nos. (New, Old), Even Nos. (New, Old).

Mathew Street

Table with columns: Mathew Street (New, Old), Odd Nos. (New, Old), Even Nos. (New, Old).

Maud Avenue

Table with columns: Maud Avenue (New, Old), Odd Nos. (New, Old), Even Nos. (New, Old).

Mautene Court

Table with columns: Mautene Court (New, Old), Odd Nos. (New, Old), Even Nos. (New, Old).

North May Street

Table with columns: Odd Nos. New Old, Even Nos. New Old, Odd Nos. New Old, Even Nos. New Old, Odd Nos. New Old, Even Nos. New Old. Rows 1-14.

South May Street

Table with columns: Odd Nos. New Old, Even Nos. New Old, Odd Nos. New Old, Even Nos. New Old, Odd Nos. New Old, Even Nos. New Old. Rows 1-28.

McHenry Street

Table with columns: Odd Nos. New Old, Even Nos. New Old, Odd Nos. New Old, Even Nos. New Old, Odd Nos. New Old, Even Nos. New Old. Rows 1-28.

Odd Nos. New Old

Table with columns: Odd Nos. New Old, Even Nos. New Old, Odd Nos. New Old, Even Nos. New Old, Odd Nos. New Old, Even Nos. New Old. Rows 1-28.

Even Nos. New Old

Table with columns: Odd Nos. New Old, Even Nos. New Old, Odd Nos. New Old, Even Nos. New Old, Odd Nos. New Old, Even Nos. New Old. Rows 1-28.

Odd Nos. New Old

Table with columns: Odd Nos. New Old, Even Nos. New Old, Odd Nos. New Old, Even Nos. New Old, Odd Nos. New Old, Even Nos. New Old. Rows 1-28.

Even Nos. New Old

Table with columns: Odd Nos. New Old, Even Nos. New Old, Odd Nos. New Old, Even Nos. New Old, Odd Nos. New Old, Even Nos. New Old. Rows 1-28.

Odd Nos. New Old

Table with columns: Odd Nos. New Old, Even Nos. New Old, Odd Nos. New Old, Even Nos. New Old, Odd Nos. New Old, Even Nos. New Old. Rows 1-28.

Even Nos. New Old

Table with columns: Odd Nos. New Old, Even Nos. New Old, Odd Nos. New Old, Even Nos. New Old, Odd Nos. New Old, Even Nos. New Old. Rows 1-28.

Melrose Street

Table with columns: Odd Nos. New Old, Even Nos. New Old, Odd Nos. New Old, Even Nos. New Old, Odd Nos. New Old, Even Nos. New Old. Rows 1-28.

McReynolds Street

Table with columns: Odd Nos. New Old, Even Nos. New Old, Odd Nos. New Old, Even Nos. New Old, Odd Nos. New Old, Even Nos. New Old. Rows 1-28.

McLean Avenue

Table with columns: Odd Nos. New Old, Even Nos. New Old, Odd Nos. New Old, Even Nos. New Old, Odd Nos. New Old, Even Nos. New Old. Rows 1-28.

Even Cont

Table with columns: Odd Nos. New Old, Even Nos. New Old, Odd Nos. New Old, Even Nos. New Old, Odd Nos. New Old, Even Nos. New Old. Rows 1-28.

Even Cont

Table with columns: Odd Nos. New Old, Even Nos. New Old, Odd Nos. New Old, Even Nos. New Old, Odd Nos. New Old, Even Nos. New Old. Rows 1-28.

Mechanic Street

Table with columns: Odd Nos. New Old, Even Nos. New Old, Odd Nos. New Old, Even Nos. New Old, Odd Nos. New Old, Even Nos. New Old. Rows 1-28.

Medill Avenue

Table with columns: Odd Nos. New Old, Even Nos. New Old, Odd Nos. New Old, Even Nos. New Old, Odd Nos. New Old, Even Nos. New Old. Rows 1-28.

McGrane Street

Table with columns: Odd Nos. New Old, Even Nos. New Old, Odd Nos. New Old, Even Nos. New Old, Odd Nos. New Old, Even Nos. New Old. Rows 1-28.

Cont'd 1st col

Table with columns: Odd Nos. New Old, Even Nos. New Old, Odd Nos. New Old, Even Nos. New Old, Odd Nos. New Old, Even Nos. New Old. Rows 1-28.

Melrose Street CONTINUED.

Table with columns: Odd Nos. New Old, Even Nos. New Old, and rows of house numbers for Melrose Street.

Melville Place

Table with columns: Odd Nos. New Old, Even Nos. New Old, and rows of house numbers for Melville Place.

Mendell Street

Table with columns: Odd Nos. New Old, Even Nos. New Old, and rows of house numbers for Mendell Street.

Menomonee Street

Table with columns: Odd Nos. New Old, Even Nos. New Old, and rows of house numbers for Menomonee Street.

Odd Nos. New Old, Even Nos. New Old

Table with columns: Odd Nos. New Old, Even Nos. New Old, and rows of house numbers.

Meridian Street

Table with columns: Odd Nos. New Old, Even Nos. New Old, and rows of house numbers for Meridian Street.

Metropolitan Place

Table with columns: Odd Nos. New Old, Even Nos. New Old, and rows of house numbers for Metropolitan Place.

Meyer Court

Table with columns: Odd Nos. New Old, Even Nos. New Old, and rows of house numbers for Meyer Court.

East Michigan St.

Table with columns: Odd Nos. New Old, Even Nos. New Old, and rows of house numbers for East Michigan St.

West Michigan St.

Table with columns: Odd Nos. New Old, Even Nos. New Old, and rows of house numbers for West Michigan St.

Odd Nos. New Old, Even Nos. New Old

Table with columns: Odd Nos. New Old, Even Nos. New Old, and rows of house numbers.

Midway Park

Table with columns: Odd Nos. New Old, Even Nos. New Old, and rows of house numbers for Midway Park.

Mildred Avenue

Table with columns: Odd Nos. New Old, Even Nos. New Old, and rows of house numbers for Mildred Avenue.

Millard Avenue

Table with columns: Odd Nos. New Old, Even Nos. New Old, and rows of house numbers for Millard Avenue.

Odd Nos. New Old, Even Nos. New Old

Table with columns: Odd Nos. New Old, Even Nos. New Old, and rows of house numbers.

Miller Street

Table with columns: Odd Nos. New Old, Even Nos. New Old, and rows of house numbers for Miller Street.

Cont'd 2d col

Table with columns: Odd Nos. New Old, Even Nos. New Old, and rows of house numbers.

Odd Nos. New Old, Even Nos. New Old

Table with columns: Odd Nos. New Old, Even Nos. New Old, and rows of house numbers.

Cont'd 1st col

Table with columns: Odd Nos. New Old, Even Nos. New Old, and rows of house numbers.

Cont'd 2d col

Table with columns: Odd Nos. New Old, Even Nos. New Old, and rows of house numbers.

Milwaukee Avenue

Table with columns: Old Nos., New Nos., Old Nos., New Nos., Old Nos., New Nos., Old Nos., New Nos., Old Nos., New Nos. (Continued)

Table with columns: Old Nos., New Nos., Old Nos., New Nos., Old Nos., New Nos., Old Nos., New Nos., Old Nos., New Nos.

Table with columns: Old Nos., New Nos., Old Nos., New Nos., Old Nos., New Nos., Old Nos., New Nos., Old Nos., New Nos.

Table with columns: Old Nos., New Nos., Old Nos., New Nos., Old Nos., New Nos., Old Nos., New Nos., Old Nos., New Nos.

Table with columns: Old Nos., New Nos., Old Nos., New Nos., Old Nos., New Nos., Old Nos., New Nos., Old Nos., New Nos.

Table with columns: Old Nos., New Nos., Old Nos., New Nos., Old Nos., New Nos., Old Nos., New Nos., Old Nos., New Nos.

Table with columns: Old Nos., New Nos., Old Nos., New Nos., Old Nos., New Nos., Old Nos., New Nos., Old Nos., New Nos.

Table with columns: Old Nos., New Nos., Old Nos., New Nos., Old Nos., New Nos., Old Nos., New Nos., Old Nos., New Nos.

Table with columns: Old Nos., New Nos., Old Nos., New Nos., Old Nos., New Nos., Old Nos., New Nos., Old Nos., New Nos.

Table with columns: Old Nos., New Nos., Old Nos., New Nos., Old Nos., New Nos., Old Nos., New Nos., Old Nos., New Nos.

Moffat Street

Table with columns: Old Nos., New Nos., Old Nos., New Nos., Old Nos., New Nos., Old Nos., New Nos., Old Nos., New Nos.

Mohawk Street

Table with columns: Old Nos., New Nos., Old Nos., New Nos., Old Nos., New Nos., Old Nos., New Nos., Old Nos., New Nos.

West Monroe Street

Table with columns: Old Nos., New Nos., Old Nos., New Nos., Old Nos., New Nos., Old Nos., New Nos., Old Nos., New Nos.

Table with columns for West Monroe St., Odd Nos., Even Nos., and New/Old status. Includes a 'Montana Street' section at the bottom right.

North Morgan St.

Table with columns for Odd Nos. and Even Nos. listing house numbers from 829 to 455.

South Morgan St.

Table with columns for Odd Nos. and Even Nos. listing house numbers from 7 to 827.

Odd Nos. New Old

Table with columns for Odd Nos. New Old listing numbers 844 to 500.

Even Nos. New Old

Table with columns for Even Nos. New Old listing numbers 844 to 500.

Odd Nos. New Old

Table with columns for Odd Nos. New Old listing numbers 2013 to 2043.

Even Nos. New Old

Table with columns for Even Nos. New Old listing numbers 1912 to 1930.

Morgan Place

Table with columns for Odd Nos. and Even Nos. listing numbers 1027 to 1054.

Morse Avenue (Pullman)

Table with columns for Odd Nos. and Even Nos. listing numbers 11213 to 11358.

Odd Nos. New Old

Table with columns for Odd Nos. New Old listing numbers 1527 to 1641.

Even Nos. New Old

Table with columns for Even Nos. New Old listing numbers 1514 to 1648.

Odd Cont

Table with columns for Odd Nos. listing numbers 11403 to 11447.

Morton Street

Table with columns for Odd Nos. and Even Nos. listing numbers 6953 to 7226.

North Mozart Street

Table with columns for Odd Nos. and Even Nos. listing numbers 609 to 1136.

Morse Avenue (Rogers Park)

Table with columns for Odd Nos. and Even Nos. listing numbers 1121 to 1510.

Odd Nos. New Old

Table with columns for Odd Nos. New Old listing numbers 1702 to 1812.

Even Nos. New Old

Table with columns for Even Nos. New Old listing numbers 1702 to 1812.

Large table with columns for Odd Nos. and Even Nos. listing numbers from 1702 to 2824.

Newton Street CONTINUED

Table with multiple columns for street names (Newton Street, East 90th Street, West 19th Place, East 90th Place, East 91st Street, East 92d Street) and rows for house numbers, organized into 'Odd Nos.' and 'Even Nos.' columns.

NEW AND OLD HOUSE NUMBERS

Table with columns: Street Name (East 92nd Street, East 92d Place, West 94th Street, etc.), New Old, Even Nos., Odd Nos., and various house numbers. Includes sub-sections like Noble Street, Noble Avenue, N. Normal P'kwy, S. Normal P'kwy, and West North Av.

NEW AND OLD HOUSE NUMBERS

Oakdale Avenue CONTINUED

Table with multiple columns listing house numbers for Oakdale Avenue, Odd Nos., Even Nos., and various street names like Oak Crescent, N. Oakley Av. Boul., and North Oakley Av.

N. Oakley Av. Boul.

Small table listing house numbers for N. Oakley Av. Boul.

North Oakley Av.

Large table listing house numbers for North Oakley Av.

Table with columns for Odd Nos. and New Old for various streets.

Table with columns for Even Nos. and New Old for various streets.

Table with columns for Odd Nos. and New Old for various streets.

Table with columns for Even Nos. and New Old for various streets.

Table with columns for Odd Nos. and New Old for various streets.

Table with columns for Even Nos. and New Old for various streets.

Table with columns for Odd Nos. and New Old for various streets, including Oakwood Boul.

S. Oakley Av. Boul.

Table listing house numbers for S. Oakley Av. Boul.

South Oakley Av.

Large table listing house numbers for South Oakley Av.

Oakwood Boul.

Table listing house numbers for Oakwood Boul.

Oakwood Boul. CONTINUED

Table with columns for Odd Nos., Even Nos., and New/Old status. Lists house numbers from 449 to 867.

Odd Nos. Even Contd.

Table with columns for Odd Nos. and Even Contd. Lists house numbers from 1744 to 919.

Even Nos. New/Old

Table with columns for Even Nos. and New/Old. Lists house numbers from 1724 to 1810.

Odd Nos. New/Old

Table with columns for Odd Nos. and New/Old. Lists house numbers from 1724 to 1810.

Even Nos. New/Old

Table with columns for Even Nos. and New/Old. Lists house numbers from 2040 to 3302.

Odd Nos. New/Old

Table with columns for Odd Nos. and New/Old. Lists house numbers from 3345 to 4341.

Even Nos. New/Old

Table with columns for Even Nos. and New/Old. Lists house numbers from 3306 to 4342.

East Ohio Street

Table with columns for Odd Nos., Even Nos., and New/Old status. Lists house numbers from 1 to 739.

Ogden Avenue

Table with columns for Odd Nos. and Even Contd. Lists house numbers from 1429 to 1977.

Cont'd 1st col

Table with columns for Odd Nos. and Even Contd. Lists house numbers from 1544 to 2038.

Cont'd 2nd col

Table with columns for Odd Nos. and Even Contd. Lists house numbers from 2040 to 3302.

O'Brien Street

Table with columns for Odd Nos., Even Nos., and New/Old status. Lists house numbers from 611 to 713.

Cont'd

Table with columns for Odd Nos. and Even Contd. Lists house numbers from 1765 to 1937.

Cont'd

Table with columns for Odd Nos. and Even Contd. Lists house numbers from 1812 to 2038.

Cont'd

Table with columns for Odd Nos. and Even Contd. Lists house numbers from 2040 to 3302.

Cont'd

Table with columns for Odd Nos. and Even Contd. Lists house numbers from 3345 to 4341.

Cont'd

Table with columns for Odd Nos. and Even Contd. Lists house numbers from 3306 to 4342.

Cont'd

Table with columns for Odd Nos. and Even Contd. Lists house numbers from 1 to 739.

West Ohio Street

Table with columns for Odd Nos., Even Nos., and New/Old status. Lists house numbers from 1 to 739.

O'Brien Avenue

Table with columns for Odd Nos., Even Nos., and New/Old status. Lists house numbers from 1639 to 2253.

Cont'd

Table with columns for Odd Nos. and Even Contd. Lists house numbers from 1644 to 1977.

Cont'd

Table with columns for Odd Nos. and Even Contd. Lists house numbers from 1812 to 2038.

Cont'd

Table with columns for Odd Nos. and Even Contd. Lists house numbers from 2040 to 3302.

Cont'd

Table with columns for Odd Nos. and Even Contd. Lists house numbers from 3345 to 4341.

Cont'd

Table with columns for Odd Nos. and Even Contd. Lists house numbers from 3306 to 4342.

Cont'd

Table with columns for Odd Nos. and Even Contd. Lists house numbers from 1 to 739.

Cont'd

Table with columns for Odd Nos. and Even Contd. Lists house numbers from 1 to 739.

Ogden Place

Table with columns for Odd Nos., Even Nos., and New/Old status. Lists house numbers from 1629 to 1737.

Main table containing columns for West Ohio Street, Odd Nos., Even Nos., and various street names like Olive Street, Olive Avenue, and East 101st Street. Includes 'CONTINUED' and 'Com'd 1st col' labels.

West 113th Place

Table with 2 columns: New, Old. Rows of house numbers for West 113th Place.

Odd Nos. New Old

Table with 3 columns: New, Old. Rows of odd house numbers.

Even Nos. New Old

Table with 3 columns: New, Old. Rows of even house numbers.

Odd Nos. New Old

Table with 3 columns: New, Old. Rows of odd house numbers.

Even Nos. New Old

Table with 3 columns: New, Old. Rows of even house numbers.

Odd Nos. New Old

Table with 3 columns: New, Old. Rows of odd house numbers.

Even Nos. New Old

Table with 3 columns: New, Old. Rows of even house numbers.

Odd Nos. New Old

Table with 3 columns: New, Old. Rows of odd house numbers.

Even Nos. New Old

Table with 3 columns: New, Old. Rows of even house numbers.

East 114th Street

Table with 2 columns: New, Old. Rows of house numbers for East 114th Street.

West 115th Street

Table with 2 columns: New, Old. Rows of house numbers for West 115th Street.

West 116th Place

Table with 2 columns: New, Old. Rows of house numbers for West 116th Place.

West 117th Place

Table with 2 columns: New, Old. Rows of house numbers for West 117th Place.

West 119th Street

Table with 2 columns: New, Old. Rows of house numbers for West 119th Street.

West 114th Street

Table with 2 columns: New, Old. Rows of house numbers for West 114th Street.

East 114th Place

Table with 2 columns: New, Old. Rows of house numbers for East 114th Place.

East 117th Street

Table with 2 columns: New, Old. Rows of house numbers for East 117th Street.

West 118th Street

Table with 2 columns: New, Old. Rows of house numbers for West 118th Street.

East 120th Street

Table with 2 columns: New, Old. Rows of house numbers for East 120th Street.

West 114th Street

Table with 2 columns: New, Old. Rows of house numbers for West 114th Street.

East 116th Street

Table with 2 columns: New, Old. Rows of house numbers for East 116th Street.

West 117th Street

Table with 2 columns: New, Old. Rows of house numbers for West 117th Street.

East 118th Place

Table with 2 columns: New, Old. Rows of house numbers for East 118th Place.

West 120th Street

Table with 2 columns: New, Old. Rows of house numbers for West 120th Street.

East 115th Street

Table with 2 columns: New, Old. Rows of house numbers for East 115th Street.

West 116th Street

Table with 2 columns: New, Old. Rows of house numbers for West 116th Street.

East 117th Place

Table with 2 columns: New, Old. Rows of house numbers for East 117th Place.

East 119th Street

Table with 2 columns: New, Old. Rows of house numbers for East 119th Street.

West 121st Street

Table with 2 columns: New, Old. Rows of house numbers for West 121st Street.

East 122d Street

Table with 2 columns: New, Old. Rows of house numbers for East 122d Street.

West 121st Street

Table with 2 columns: New, Old. Rows of house numbers for West 121st Street.

East 122d Street

Table with 2 columns: New, Old. Rows of house numbers for East 122d Street.

West 122d Street

Table with 2 columns: New, Old. Rows of house numbers for West 122d Street.

West 122d Street

Table with 2 columns: New, Old. Rows of house numbers for West 122d Street.

West 122d Street
New Old
163 274
165 376
167 378

East 122d Place
25 2606
41 2590

East 123d Street
16 2615
30 2601
32 2599

West 123d Street
553 652
501 601
505 605

West 124th Street
23 2742
181 2682

West 124th Street
35 135

East 133d Street
3143 610
3145 606

East 134th Street
223 2614
229 2608
235 2602

East 135th Place
245 2588
251 2584

East 136th Street
241 2594
245 2590
249 2586

East 136th Street
285 2602
243 2594
251 2584

East 136th Street
220 2615
228 2597
242 2595

East 138th Street
304 2557
306 2555
485 2404

East Ontario Street
111 336
113 338
119 344

Even New Old
148 361
150 363
152 365

West Ontario St.
13 266 E
15 264 E
17 262 E

Even Contd
350 98 E
354 91 E
358 89 E

Even New Old
5225 5218
5229 5222
5233 5224

Even Contd
5750 5739
5802 5801
5806 5809

Even Contd
1513 10
1514 11
1516 13

Orchard Street
1512 9
1514 11
1516 13

Even New Old
1621 80
1623 82
1627 84

Even New Old
1709 122
1713 124
1715 126

Even Contd
2001 262
2007 286
2031 292

Even Contd
2147 860
2149 862
2151 864

Even New Old
1624 83
1626 85
1630 87

Even New Old
1709 122
1713 124
1715 126

Even Contd
2001 262
2007 286
2031 292

Orleans Street
308 1
325 3
431 47

Cont'd 1st col

Oregon Avenue

Table with columns for house numbers and corresponding values for Oregon Avenue.

Orleans Street

Table with columns for house numbers and corresponding values for Orleans Street.

NEW AND OLD HOUSE NUMBERS

Table with multiple columns for street names (Orleans Street, Osborne Street, Osgood Street, Otto Street, Palmer Street, Panama Street, Park Street, Park Avenue) and rows for house numbers (New, Old, Even, Odd). Includes sub-sections like 'Even Cont', 'Our Street', 'Palmer Square', and 'Odd Cont'.

West Polk Street CONTINUED

Table with 3 columns: Odd New, Odd Old, Even New. Lists house numbers for West Polk Street.

Table with 3 columns: Odd New, Odd Old, Even New. Lists house numbers for West Polk Street.

Table with 3 columns: Even New, Even Old, Odd New. Lists house numbers for West Polk Street.

Table with 3 columns: Odd New, Odd Old, Even New. Lists house numbers for West Polk Street.

Table with 3 columns: Even New, Even Old, Odd New. Lists house numbers for West Polk Street.

Table with 3 columns: Odd New, Odd Old, Even New. Lists house numbers for West Polk Street.

Table with 3 columns: Even New, Even Old, Odd New. Lists house numbers for West Polk Street.

Table with 3 columns: Odd New, Odd Old, Even New. Lists house numbers for West Polk Street.

Table with 3 columns: Even New, Even Old, Odd New. Lists house numbers for West Polk Street.

Odd Cont

Table with 3 columns: Even New, Even Old, Odd New. Lists house numbers for Odd Cont.

Cont'd 2d col

Table with 3 columns: Even New, Even Old, Odd New. Lists house numbers for Potomac Avenue.

Potomac Avenue

Table with 3 columns: Even New, Even Old, Odd New. Lists house numbers for Potomac Avenue.

Poplar Av. (A)

Table with 3 columns: Even New, Even Old, Odd New. Lists house numbers for Poplar Av. (A).

Potomac Avenue

Table with 3 columns: Even New, Even Old, Odd New. Lists house numbers for Potomac Avenue.

Odd Cont

Table with 3 columns: Even New, Even Old, Odd New. Lists house numbers for Odd Cont.

Cont'd 2d col

Table with 3 columns: Even New, Even Old, Odd New. Lists house numbers for Potomac Avenue.

Potomac Avenue

Table with 3 columns: Even New, Even Old, Odd New. Lists house numbers for Potomac Avenue.

Powell Park

Table with 3 columns: Even New, Even Old, Odd New. Lists house numbers for Powell Park.

N. Prairie Av. (A)

Table with 3 columns: Even New, Even Old, Odd New. Lists house numbers for N. Prairie Av. (A).

Odd Cont

Table with 3 columns: Even New, Even Old, Odd New. Lists house numbers for Odd Cont.

Cont'd 2d col

Table with 3 columns: Even New, Even Old, Odd New. Lists house numbers for Odd Cont.

Potwyne Place

Table with 3 columns: Even New, Even Old, Odd New. Lists house numbers for Potwyne Place.

Powell Avenue

Table with 3 columns: Even New, Even Old, Odd New. Lists house numbers for Powell Avenue.

Cont'd 2d col

Table with 3 columns: Even New, Even Old, Odd New. Lists house numbers for Powell Avenue.

S. Prairie Av. (A)

Table with 3 columns: Even New, Even Old, Odd New. Lists house numbers for S. Prairie Av. (A).

Fratt Street

Table with 3 columns: Even New, Even Old, Odd New. Lists house numbers for Fratt Street.

NEW AND OLD HOUSE NUMBERS

Main table containing street addresses and house numbers for Pratt Street, Pratt Avenue, Racine Avenue, Racine Place, Raleigh Court, West Randolph St., Prindville Street, and West Quincy Street. Columns include Old Nos., Even Nos., and New Nos. for each street.

West Randolph St. CONTINUED. Table with columns for New and Old house numbers.

Table with columns for New and Old house numbers.

Table with columns for New and Old house numbers.

Table with columns for New and Old house numbers.

Table with columns for New and Old house numbers.

Table with columns for New and Old house numbers.

Table with columns for New and Old house numbers.

Table with columns for New and Old house numbers.

Table with columns for New and Old house numbers.

Rascher Avenue. Table with columns for New and Old house numbers.

Table with columns for New and Old house numbers.

Table with columns for New and Old house numbers.

Table with columns for New and Old house numbers.

Table with columns for New and Old house numbers.

Table with columns for New and Old house numbers.

Table with columns for New and Old house numbers.

Table with columns for New and Old house numbers.

Table with columns for New and Old house numbers.

Raven Street. Table with columns for New and Old house numbers.

Table with columns for New and Old house numbers.

Table with columns for New and Old house numbers.

Table with columns for New and Old house numbers.

Table with columns for New and Old house numbers.

Table with columns for New and Old house numbers.

Table with columns for New and Old house numbers.

Table with columns for New and Old house numbers.

Table with columns for New and Old house numbers.

E. Ravenswood Pk. Table with columns for New and Old house numbers.

Table with columns for New and Old house numbers.

Table with columns for New and Old house numbers.

Table with columns for New and Old house numbers.

Table with columns for New and Old house numbers.

Table with columns for New and Old house numbers.

Table with columns for New and Old house numbers.

Table with columns for New and Old house numbers.

Table with columns for New and Old house numbers.

Table with columns for New and Old house numbers.

Table with columns for New and Old house numbers.

Table with columns for New and Old house numbers.

Table with columns for New and Old house numbers.

Table with columns for New and Old house numbers.

Table with columns for New and Old house numbers.

Table with columns for New and Old house numbers.

Table with columns for New and Old house numbers.

Table with columns for New and Old house numbers.

Large grid of house numbers for various streets including West Randolph St., Rascher Avenue, Raven Street, E. Ravenswood Pk., Read Court, Reed Place, Redfield Street, Rees Street, Rhine Street, Rice Street, and North Richmond St.

N. Richmond St. CONTINUED

Table with columns: Odd Nos., Even Nos., Odd Nos., Even Nos., Odd Nos., Even Nos., Odd Nos., Even Nos., Odd Nos., Even Nos. Rows list house numbers and corresponding values for N. Richmond St.

Cont'd 2d col

South Richmond St.

Table with columns: Odd Nos., Even Nos., Odd Nos., Even Nos., Odd Nos., Even Nos., Odd Nos., Even Nos., Odd Nos., Even Nos. Rows list house numbers and corresponding values for South Richmond St.

Ridge Avenue

Table with columns: Odd Nos., Even Nos., Odd Nos., Even Nos., Odd Nos., Even Nos., Odd Nos., Even Nos., Odd Nos., Even Nos. Rows list house numbers and corresponding values for Ridge Avenue.

Cont'd 1st col

North Ridgeway Av.

Table with columns: Odd Nos., Even Nos., Odd Nos., Even Nos., Odd Nos., Even Nos., Odd Nos., Even Nos., Odd Nos., Even Nos. Rows list house numbers and corresponding values for North Ridgeway Av.

South Ridgeway Av.

Table with columns: Odd Nos., Even Nos., Odd Nos., Even Nos., Odd Nos., Even Nos., Odd Nos., Even Nos., Odd Nos., Even Nos. Rows list house numbers and corresponding values for South Ridgeway Av.

Table with columns for street names (Roscoe Street, Rose Street, Rosebud Avenue, Rosemont Avenue, Rosin Street, Roslyn Place, Ruble Street, S. Sacramento Av.) and rows of house numbers, organized by 'Odd Nos.' and 'Even Nos.'.

S. Sacramento Av.

Table with columns: Odd Nos., Even Nos., New, Old. Rows include house numbers from 327 to 2547.

Even-Cont

Table with columns: Odd Nos., Even Nos., New, Old. Rows include house numbers from 2642 to 2732.

Saint Anthony's Ct.

Table with columns: Odd Nos., Even Nos., New, Old. Rows include house numbers from 4815 to 4957.

Saint Clair Street

Table with columns: Odd Nos., Even Nos., New, Old. Rows include house numbers from 501 to 607.

Saint George's Ct.

Table with columns: Odd Nos., Even Nos., New, Old. Rows include house numbers from 2709 to 2737.

Saint Helens Street

Table with columns: Odd Nos., Even Nos., New, Old. Rows include house numbers from 2713 to 2718.

Saint James Place

Table with columns: Odd Nos., Even Nos., New, Old. Rows include house numbers from 401 to 471.

Saint John's Court

Table with columns: Odd Nos., Even Nos., New, Old. Rows include house numbers from 4121 to 4131.

S. Saint Louis Av.

Table with columns: Odd Nos., Even Nos., New, Old. Rows include house numbers from 401 to 1647.

Even Cont

Table with columns: Odd Nos., Even Nos., New, Old. Rows include house numbers from 113 to 1647.

Even Nos. New Old

Table with columns: Even Nos., New, Old. Rows include house numbers from 348 to 1647.

Cont'd 1st col

Table with columns: Even Nos., New, Old. Rows include house numbers from 1648 to 2552.

Even Nos. New Old

Table with columns: Even Nos., New, Old. Rows include house numbers from 1630 to 2731.

Even Cont

Table with columns: Even Nos., New, Old. Rows include house numbers from 2732 to 2869.

San Jose Avenue

Table with columns: Even Nos., New, Old. Rows include house numbers from 2239 to 2245.

S. Sawyer Av. CONTINUED. Table with columns for Odd Nos. and Even Nos. for various streets including West Schiller St., Scott Street, and Scott Place.

West Schiller St. Table with columns for Odd Nos. and Even Nos. for West Schiller St. and Scott Street.

Scott Street Table with columns for Odd Nos. and Even Nos. for Scott Street and Scott Place.

Scott Place Table with columns for Odd Nos. and Even Nos. for Scott Place and Sebors Street.

School Street Table with columns for Odd Nos. and Even Nos. for School Street and Odd Cont.

Sebors Street Table with columns for Odd Nos. and Even Nos. for Sebors Street and Odd Cont.

Sedgwick Street Table with columns for Odd Nos. and Even Nos. for Sedgwick Street and Odd Cont.

Sedgwick Street (continued) Table with columns for Odd Nos. and Even Nos. for Sedgwick Street and Odd Cont.

Schick Place Table with columns for Odd Nos. and Even Nos. for Schick Place and East Schiller St.

East Schiller St. Table with columns for Odd Nos. and Even Nos. for East Schiller St.

West 72d Street CONTINUED. Table with columns: Odd Nos. New Old, Even Nos. New Old, Even Cont. Rows include numbers like 761 859, 911 1011, 1223 1323, etc.

North 72d Avenue. Table with columns: Odd Nos. New Old, Even Nos. New Old. Rows include numbers like 5829 3740, 5841 3752, 6075 3942, etc.

East 72d Place. Table with columns: Odd Nos. New Old, Even Nos. New Old. Rows include numbers like 1211 1014, 1315 944, 1325 934, etc.

West 72d Place. Table with columns: Odd Nos. New Old, Even Nos. New Old. Rows include numbers like 1245 1345, 1247 1347, 1249 1349, etc.

East 73d Street. Table with columns: Odd Nos. New Old, Even Nos. New Old. Rows include numbers like 539 1548, 745 1412, 749 1408, etc.

West 73d Street. Table with columns: Odd Nos. New Old, Even Nos. New Old, Even Cont. Rows include numbers like 107 213, 139 219, 143 221, etc.

West 74th Place. Table with columns: Odd Nos. New Old, Even Nos. New Old. Rows include numbers like 1235 1335, 1214 1308, 1222 1322, etc.

East 73d Place. Table with columns: Odd Nos. New Old, Even Nos. New Old. Rows include numbers like 1519 862, 1527 856, 1533 852, etc.

West 73d Place. Table with columns: Odd Nos. New Old, Even Nos. New Old. Rows include numbers like 1229 1239, 1224 1324, 1226 1326, etc.

East 74th Street. Table with columns: Odd Nos. New Old, Even Nos. New Old. Rows include numbers like 1517 866, 1525 860, 1527 858, etc.

East 74th Place. Table with columns: Odd Nos. New Old, Even Nos. New Old. Rows include numbers like 1527 904, 1531 900, 1536 893, etc.

West 74th Place. Table with columns: Odd Nos. New Old, Even Nos. New Old. Rows include numbers like 1214 1308, 1222 1322, 1264 1366, etc.

East 75th Street. Table with columns: Odd Nos. New Old, Even Nos. New Old. Rows include numbers like 625 1514, 649 1492, 654 1490, etc.

East 76th Street. Table with columns: Odd Nos. New Old, Even Nos. New Old. Rows include numbers like 615 1560, 818 1425, 822 1419, etc.

West 74th Street. Table with columns: Odd Nos. New Old, Even Nos. New Old. Rows include numbers like 447 547, 300 400, 2627 176, etc.

West 75th Street. Table with columns: Odd Nos. New Old, Even Nos. New Old. Rows include numbers like 136 234, 200 270, 202 272, etc.

East 75th Place. Table with columns: Odd Nos. New Old, Even Nos. New Old. Rows include numbers like 2701 160, 2700 156, 2706 154, etc.

East 76th Street. Table with columns: Odd Nos. New Old, Even Nos. New Old. Rows include numbers like 615 1560, 818 1425, 822 1419, etc.

West 77th Street. Table with columns: Odd Nos. New Old, Even Nos. New Old. Rows include numbers like 514 614, 516 616, 520 618, etc.

East 77th Place. Table with columns: Odd Nos. New Old, Even Nos. New Old. Rows include numbers like 2809 152, 2820 139, 2811 150, etc.

West 76th Street. Table with columns: Odd Nos. New Old, Even Nos. New Old. Rows include numbers like 344 444, 600 700, 610 710.

East 76th Place. Table with columns: Odd Nos. New Old, Even Nos. New Old. Rows include numbers like 1501 980, 1505 978, 1510 974, etc.

East 77th Street. Table with columns: Odd Nos. New Old, Even Nos. New Old. Rows include numbers like 2608 302, 1118 1257, 2611 292, etc.

East 78th Street. Table with columns: Odd Nos. New Old, Even Nos. New Old. Rows include numbers like 211 sw cor, 215 Pral av, 2921 136, etc.

West 61st Place CONTINUED

Table with 2 columns: New, Old. Contains house numbers for West 61st Place.

Odd Nos. New Old

Table with 2 columns: New, Old. Contains odd house numbers.

Even Nos. New Old

Table with 2 columns: New, Old. Contains even house numbers.

Odd Nos. New Old

Table with 2 columns: New, Old. Contains odd house numbers.

Even Nos. New Old

Table with 2 columns: New, Old. Contains even house numbers.

Odd Nos. New Old

Table with 2 columns: New, Old. Contains odd house numbers.

Even Nos. New Old

Table with 2 columns: New, Old. Contains even house numbers.

Odd Nos. New Old

Table with 2 columns: New, Old. Contains odd house numbers.

Even Nos. New Old

Table with 2 columns: New, Old. Contains even house numbers.

Odd Nos. New Old

Table with 2 columns: New, Old. Contains odd house numbers.

East 62d Street

Table with 2 columns: New, Old. Contains house numbers for East 62d Street.

Even Cont

Table with 2 columns: New, Old. Contains even house numbers.

West 62d Street

Table with 2 columns: New, Old. Contains house numbers for West 62d Street.

Even Cont

Table with 2 columns: New, Old. Contains even house numbers.

East 62d Place

Table with 2 columns: New, Old. Contains house numbers for East 62d Place.

West 62d Place

Table with 2 columns: New, Old. Contains house numbers for West 62d Place.

East 62d Place

Table with 2 columns: New, Old. Contains house numbers for East 62d Place.

West 62d Place

Table with 2 columns: New, Old. Contains house numbers for West 62d Place.

East 62d Place

Table with 2 columns: New, Old. Contains house numbers for East 62d Place.

West 62d Place

Table with 2 columns: New, Old. Contains house numbers for West 62d Place.

East 63d Street

Table with 2 columns: New, Old. Contains house numbers for East 63d Street.

Cont'd 2d col.

West 63d Street

Table with 2 columns: New, Old. Contains house numbers for West 63d Street.

Even Cont

Table with 2 columns: New, Old. Contains even house numbers.

West 62d Street

Table with 2 columns: New, Old. Contains house numbers for West 62d Street.

Even Cont

Table with 2 columns: New, Old. Contains even house numbers.

Even Cont

Table with 2 columns: New, Old. Contains even house numbers.

Even Cont

Table with 2 columns: New, Old. Contains even house numbers.

Even Cont

Table with 2 columns: New, Old. Contains even house numbers.

Even Cont

Table with 2 columns: New, Old. Contains even house numbers.

Even Cont

Table with 2 columns: New, Old. Contains even house numbers.

Even Cont

Table with 2 columns: New, Old. Contains even house numbers.

Even Cont

Table with 2 columns: New, Old. Contains even house numbers.

Even Cont

Table with 2 columns: New, Old. Contains even house numbers.

Table with multiple columns for street names (Stephenson Av., Strong Street, Sullivan Street, Summerdale Av., Stowe Street, Stratford Place, String Street, Sunnyside Avenue, West Superior St.) and rows for house numbers, categorized by 'Odd Nos. New/Old' and 'Even Nos. New/Old'. Includes sub-sections like 'Continued' and 'Cont'd 2d col'.

West Superior St.

CONTINUED

Table with columns: Odd New, Even New, Odd Old, Even Old. Rows include house numbers from 2335 to 5823.

Even Nos. New Old

Table with columns: Even New, Even Old. Rows include house numbers from 5827 to 5936.

Even Cont

Table with columns: Even New, Even Old. Rows include house numbers from 5552 to 5914.

Even Nos. New Old

Table with columns: Even New, Even Old. Rows include house numbers from 2750 to 4379.

Even Cont

Table with columns: Even New, Even Old. Rows include house numbers from 4930 to 5411.

Odd Nos. New Old

Table with columns: Odd New, Odd Old. Rows include house numbers from 241 341 to 437 439.

Even Cont

Table with columns: Odd New, Odd Old. Rows include house numbers from 4025 to 5411.

Even Nos. New Old

Table with columns: Even New, Even Old. Rows include house numbers from 226 326 to 346 446.

Even Cont

Table with columns: Even New, Even Old. Rows include house numbers from 4020 to 4944.

Odd Nos. New Old

Table with columns: Odd New, Odd Old. Rows include house numbers from 226 326 to 346 446.

Even Cont

Table with columns: Odd New, Odd Old. Rows include house numbers from 1815 to 2667.

Even Nos. New Old

Table with columns: Even New, Even Old. Rows include house numbers from 1716 915 to 1804 969.

Even Cont

Table with columns: Even New, Even Old. Rows include house numbers from 1815 to 2667.

Even Nos. New Old

Table with columns: Even New, Even Old. Rows include house numbers from 1716 915 to 1804 969.

Even Cont

Table with columns: Even New, Even Old. Rows include house numbers from 1815 to 2667.

Even Nos. New Old

Table with columns: Even New, Even Old. Rows include house numbers from 1246 617 to 1342 679.

Even Cont

Table with columns: Even New, Even Old. Rows include house numbers from 1246 617 to 1342 679.

Syracuse Avenue

Table with columns: Even New, Even Old. Rows include house numbers from 4025 to 2667.

West Taylor Street

Table with columns: Even New, Even Old. Rows include house numbers from 301 2 to 1004 343.

North Talman Ave.

Table with columns: Even New, Even Old. Rows include house numbers from 311 1170 to 1710 909.

Fulton

Table with columns: Even New, Even Old. Rows include house numbers from 1421 740 to 1710 909.

Surf Street

Table with columns: Even New, Even Old. Rows include house numbers from 400 1944 to 558 1802.

Surry Court

Table with columns: Even New, Even Old. Rows include house numbers from 2400 1 to 2436 37.

Swann Street

Table with columns: Even New, Even Old. Rows include house numbers from 125 225 to 289 335.

South Talman Ave.

Table with columns: Even New, Even Old. Rows include house numbers from 1230 601 to 1244 615.

West 13th Street CONTINUED

Table with columns: Odd Nos. New Old, Even Nos. New Old. Rows list house numbers from 1739 to 2235.

Table with columns: Odd Nos. New Old, Even Nos. New Old. Rows list house numbers from 2237 to 3736.

West 13th Place

Table with columns: Odd Nos. New Old, Even Nos. New Old. Rows list house numbers from 541 to 3536.

East 30th Street

Table with columns: Odd Nos. New Old, Even Nos. New Old. Rows list house numbers from 11 to 471.

West 30th Street

Table with columns: Odd Nos. New Old, Even Nos. New Old. Rows list house numbers from 1 to 507.

Table with columns: Even Nos. New Old, Odd Nos. New Old. Rows list house numbers from 104 to 310.

West 31st Street

Table with columns: Even Nos. New Old, Odd Nos. New Old. Rows list house numbers from 17 to 207.

West 30th Place

Table with columns: Even Nos. New Old, Odd Nos. New Old. Rows list house numbers from 336 to 352.

East 31st Street

Table with columns: Even Nos. New Old, Odd Nos. New Old. Rows list house numbers from 12 to 1221.

Table with columns: Even Nos. New Old, Odd Nos. New Old. Rows list house numbers from 1123 to 4821.

West 31st Place

Table with columns: Even Nos. New Old, Odd Nos. New Old. Rows list house numbers from 911 to 1852.

West 39th St.

Table with columns for New and Old house numbers along West 39th St. Includes 'CONTINUED' label.

Even Nos. Old

Table with columns for Even Nos. and Old house numbers.

Odd Nos. New Old

Table with columns for Odd Nos., New, and Old house numbers.

Even Nos. New Old

Table with columns for Even Nos., New, and Old house numbers.

Touhy Avenue

Table with columns for Odd Nos., New, and Old house numbers along Touhy Avenue.

East 39th Place

Table with columns for East 39th Place house numbers.

Even Contd

Table with columns for Even Contd house numbers.

Odd Nos. New Old

Table with columns for Odd Nos., New, and Old house numbers.

Even Nos. New Old

Table with columns for Even Nos., New, and Old house numbers.

Town Street

Table with columns for Town Street house numbers.

West 39th Place

Table with columns for West 39th Place house numbers.

Even Contd

Table with columns for Even Contd house numbers.

Odd Nos. New Old

Table with columns for Odd Nos., New, and Old house numbers.

Even Nos. New Old

Table with columns for Even Nos., New, and Old house numbers.

Town Street

Table with columns for Town Street house numbers.

Thomas Street

Table with columns for Thomas Street house numbers.

Even Contd

Table with columns for Even Contd house numbers.

Odd Nos. New Old

Table with columns for Odd Nos., New, and Old house numbers.

Even Nos. New Old

Table with columns for Even Nos., New, and Old house numbers.

Town Street

Table with columns for Town Street house numbers.

Thome Avenue

Table with columns for Thome Avenue house numbers.

Cont'd 1st col

Table with columns for Cont'd 1st col house numbers.

Thorndale Avenue

Table with columns for Thorndale Avenue house numbers.

Cont'd 1st col

Table with columns for Cont'd 1st col house numbers.

Throop Street

Table with columns for Throop Street house numbers.

Cont'd 2d col

Table with columns for Cont'd 2d col house numbers.

Tilden Street

Table with columns for Tilden Street house numbers.

Even Contd

Table with columns for Even Contd house numbers.

Cont'd 1st col

Table with columns for Cont'd 1st col house numbers.

Tooker Place

Table with columns for Tooker Place house numbers.

Cont'd 1st col

Table with columns for Cont'd 1st col house numbers.

Cont'd 2d col

Table with columns for Cont'd 2d col house numbers.

Cont'd 3d col

Table with columns for Cont'd 3d col house numbers.

Cont'd 4th col

Table with columns for Cont'd 4th col house numbers.

Tower Court

Table with columns for Tower Court house numbers.

Town Street

Table with columns for Town Street house numbers.

Towns Court

Table with columns for Towns Court house numbers.

Townsend Street

Table with columns for Townsend Street house numbers.

Cont'd 1st col

Table with columns for Cont'd 1st col house numbers.

Cont'd 2d col

Table with columns for Cont'd 2d col house numbers.

Cont'd 3d col

Table with columns for Cont'd 3d col house numbers.

Cont'd 4th col

Table with columns for Cont'd 4th col house numbers.

Cont'd 5th col

Table with columns for Cont'd 5th col house numbers.

Cont'd 6th col

Table with columns for Cont'd 6th col house numbers.

Cont'd 7th col

Table with columns for Cont'd 7th col house numbers.

Cont'd 8th col

Table with columns for Cont'd 8th col house numbers.

Cont'd 9th col

Table with columns for Cont'd 9th col house numbers.

Cont'd 10th col

Table with columns for Cont'd 10th col house numbers.

Table with 16 columns: Townsend Street, Add Nos., Even New, Old, Odd New, Old, Even New, Old, Odd New, Old, Even New, Old, Odd New, Old, Even New, Old, Odd New, Old. Rows include streets like Townsend, Tremont, Tripp Avenue, North Troy Street, and South Troy Street.

South Troy St. CONTINUED

Table with columns for Odd New, Old, Even New, Old, Odd New, Old, Even New, Old, Odd New, Old, Even New, Old, Odd New, Old, Even New, Old. Rows list house numbers for South Troy St.

N. Trumbull Ave.

Table with columns for Odd New, Old, Even New, Old, Odd New, Old, Even New, Old, Odd New, Old, Even New, Old, Odd New, Old, Even New, Old. Rows list house numbers for N. Trumbull Ave.

S. Trumbull Ave.

Table with columns for Odd New, Old, Even New, Old, Odd New, Old, Even New, Old, Odd New, Old, Even New, Old, Odd New, Old, Even New, Old. Rows list house numbers for S. Trumbull Ave.

Turner Avenue

Table with columns for Odd New, Old, Even New, Old, Odd New, Old, Even New, Old, Odd New, Old, Even New, Old, Odd New, Old, Even New, Old. Rows list house numbers for Turner Avenue.

East 12th Street

Table with columns for Odd New, Old, Even New, Old, Odd New, Old, Even New, Old, Odd New, Old, Even New, Old, Odd New, Old, Even New, Old. Rows list house numbers for East 12th Street.

West 12th Street

Table with columns for Odd New, Old, Even New, Old, Odd New, Old, Even New, Old, Odd New, Old, Even New, Old, Odd New, Old, Even New, Old. Rows list house numbers for West 12th Street.

Table with multiple columns for street names (West 12th Street, West 12th Place, East 20th Street) and corresponding house numbers. Includes sub-headers for 'New' and 'Old' numbers and a 'Continued' label.

West 21st Street

Table listing house numbers for West 21st Street, including 'Continued' and 'New Old' columns.

West 21st Place

Table listing house numbers for West 21st Place, including 'New Old' columns.

West 22d Street

Table listing house numbers for West 22d Street, including 'New Old' columns.

East 22d Street

Table listing house numbers for East 22d Street, including 'New Old' columns.

West 22d Street

Table listing house numbers for West 22d Street, including 'New Old' columns.

Odd Cont'd

Small table listing odd house numbers.

West 22d Street

Table with columns: Odd Nos., Even Nos., New, Old. Lists house numbers for West 22d Street.

Odd Nos., Even Nos., New, Old

Table with columns: Odd Nos., Even Nos., New, Old. Lists house numbers for West 22d Street.

Even Nos., Odd Nos., New, Old

Table with columns: Even Nos., Odd Nos., New, Old. Lists house numbers for West 22d Street.

Odd Nos., Even Nos., New, Old

Table with columns: Odd Nos., Even Nos., New, Old. Lists house numbers for West 22d Street.

Even Nos., Odd Nos., New, Old

Table with columns: Even Nos., Odd Nos., New, Old. Lists house numbers for West 22d Street.

Odd Nos., Even Nos., New, Old

Table with columns: Odd Nos., Even Nos., New, Old. Lists house numbers for West 22d Street.

Even Nos., Odd Nos., New, Old

Table with columns: Even Nos., Odd Nos., New, Old. Lists house numbers for West 22d Street.

Odd Nos., Even Nos., New, Old

Table with columns: Odd Nos., Even Nos., New, Old. Lists house numbers for West 22d Street.

Even Nos., Odd Nos., New, Old

Table with columns: Even Nos., Odd Nos., New, Old. Lists house numbers for West 22d Street.

West 22d Place

Table with columns: Even Nos., Odd Nos., New, Old. Lists house numbers for West 22d Place.

Even Contd

Table with columns: Even, Contd. Lists house numbers for West 22d Place.

East 23d Street

Table with columns: Even, Contd. Lists house numbers for East 23d Street.

West 23d Street

Table with columns: Even, Contd. Lists house numbers for West 23d Street.

Table with multiple columns for house numbers and street names. Columns include 'West 23d Street', 'West 24th Place', 'West 24th Street', and 'East 25th Street'. Each column lists 'New' and 'Old' house numbers. Includes 'Even Contd' and 'Odd Contd' sections.

NEW AND OLD HOUSE NUMBERS

West 25th Street CONTINUED

Table with columns: Odd No. New, Even No. New, Odd No. Old, Even No. Old. Lists house numbers from 617 595 E to 2913 560.

West 25th Street

Table with columns: Odd No. New, Even No. New, Odd No. Old, Even No. Old. Lists house numbers from 2915 562 to 513 111 E.

West 25th Place

Table with columns: Odd No. New, Even No. New, Odd No. Old, Even No. Old. Lists house numbers from 201 269 E to 212 268 E.

East 26th Street

Table with columns: Odd No. New, Even No. New, Odd No. Old, Even No. Old. Lists house numbers from 517 107 E to 59 137.

West 26th Street

Table with columns: Odd No. New, Even No. New, Odd No. Old, Even No. Old. Lists house numbers from 111 111 to 708 534 E.

West 26th Street

Table with columns: Odd No. New, Even No. New, Odd No. Old, Even No. Old. Lists house numbers from 111 111 to 708 534 E.

West 26th Street

Table with columns: Odd No. New, Even No. New, Odd No. Old, Even No. Old. Lists house numbers from 111 111 to 708 534 E.

West 26th Street

Table with columns: Odd No. New, Even No. New, Odd No. Old, Even No. Old. Lists house numbers from 111 111 to 708 534 E.

West 26th Street

Table with columns: Odd No. New, Even No. New, Odd No. Old, Even No. Old. Lists house numbers from 111 111 to 708 534 E.

West 26th Street

Table with columns: CONTINUED, Odd Nos., Even Nos., New Old. Lists house numbers and their status along West 26th Street.

West 26th Place

Table with columns: Odd Nos., Even Nos., New Old. Lists house numbers and their status along West 26th Place.

East 27th Street

Table with columns: Odd Nos., Even Nos., New Old. Lists house numbers and their status along East 27th Street.

West 27th Street

Table with columns: Odd Nos., Even Nos., New Old. Lists house numbers and their status along West 27th Street.

East 28th Street

Table with columns: Odd Nos., Even Nos., New Old. Lists house numbers and their status along East 28th Street.

West 28th Street

Table with columns: Odd Nos., Even Nos., New Old. Lists house numbers and their status along West 28th Street.

West 28th Street

Table with columns: Odd Nos., Even Nos., New Old. Lists house numbers and their status along West 28th Street.

West 28th Place

Table with columns: Odd Nos., Even Nos., New Old. Lists house numbers and their status along West 28th Place.

West 29th Street

Table with columns: Odd Nos., Even Nos., New Old. Lists house numbers and their status along West 29th Street.

East 29th Street

Table with columns: Odd Nos., Even Nos., New Old. Lists house numbers and their status along East 29th Street.

West 29th Street

Table with columns: Odd Nos., Even Nos., New Old. Lists house numbers and their status along West 29th Street.

Odd Nos. New Old

Table with columns: Odd Nos., New Old. Lists odd-numbered house numbers and their status.

Even Cont'd

Table with columns: Even Cont'd. Lists even-numbered house numbers and their status.

West 29th Place

Table with columns: Odd Nos., Even Nos., New Old. Lists house numbers and their status along West 29th Place.

Umland Street

Table with columns: Odd Nos., Even Nos., New Old. Lists house numbers and their status along Umland Street.

North Union Street

Table with columns: Odd Nos., Even Nos., New Old. Lists house numbers and their status along North Union Street.

Even Nos. New Old

Table with columns: Even Nos., New Old. Lists even-numbered house numbers and their status.

Cont'd 1st col

Table with columns: Even Nos., New Old. Continuation of even-numbered house numbers.

West 29th Place

Table with columns: Odd Nos., Even Nos., New Old. Lists house numbers and their status along West 29th Place.

Umland Street

Table with columns: Odd Nos., Even Nos., New Old. Lists house numbers and their status along Umland Street.

Cont'd 2d col

Table with columns: Odd Nos., Even Nos., New Old. Continuation of house numbers.

Odd Nos. New Old

Table with columns: Odd Nos., New Old. Lists odd-numbered house numbers and their status.

South Union Street

Table with columns: Odd Nos., Even Nos., New Old. Lists house numbers and their status along South Union Street.

Even Nos. New Old

Table with columns: Even Nos., New Old. Lists even-numbered house numbers and their status.

Union Court

Table with columns: Odd Nos., Even Nos., New Old. Lists house numbers and their status along Union Court.

Union Place

Table with columns: Odd Nos., Even Nos., New Old. Lists house numbers and their status along Union Place.

South Union Street

Table with columns: Odd Nos., Even Nos., New Old. Lists house numbers and their status along South Union Street.

Odd Nos. New Old

Table with columns: Odd Nos., New Old. Lists odd-numbered house numbers and their status.

Union Park Court

Table with columns: Odd Nos., Even Nos., New Old. Lists house numbers and their status along Union Park Court.

Upton Street

Table with columns: Odd Nos., Even Nos., New Old. Lists house numbers and their status along Upton Street.

W. Vanburen St.

Table with columns: Odd Nos., Even Nos., New Old. Lists house numbers and their status along W. Vanburen St.

Even Nos. New Old

Table with columns: Even Nos., New Old. Lists even-numbered house numbers and their status.

Union Court

Table with columns: Odd Nos., Even Nos., New Old. Lists house numbers and their status along Union Court.

Union Place

Table with columns: Odd Nos., Even Nos., New Old. Lists house numbers and their status along Union Place.

South Union Street

Table with columns: Odd Nos., Even Nos., New Old. Lists house numbers and their status along South Union Street.

Table with columns: Odd Nos., Even Nos., New Old. Lists house numbers and their status along the right edge of the page.

West Vanburen St.

Table with columns: New, Old, Even, New, Old. Rows 1035-1517.

Table with columns: New, Old, Even, New, Old. Rows 1523-1938.

Table with columns: New, Old, Even, New, Old. Rows 1940-2056.

Table with columns: New, Old, Even, New, Old. Rows 2201-2532.

Table with columns: New, Old, Even, New, Old. Rows 2058-2838.

Table with columns: New, Old, Even, New, Old. Rows 2840-3524.

Table with columns: New, Old, Even, New, Old. Rows 3526-4128.

Table with columns: New, Old, Even, New, Old. Rows 4130-4822.

Table with columns: New, Old, Even, New, Old. Rows 4824-5518.

Even Contd

Cont'd last col

Vanburen Place

Table with columns: New, Old, Even, New, Old. Rows 2011-2127.

Vedder Street

Table with columns: New, Old, Even, New, Old. Rows 521-742.

Vernon Park Place or Gurley Street

Table with columns: New, Old, Even, New, Old. Rows 843-936.

Vernon Park Place CONTINUED

Table with columns: Odd Nos., New Old, Even Nos., New Old. Lists house numbers for Vernon Park Place.

Victor Avenue

Table with columns: Odd Nos., New Old, Even Nos., New Old. Lists house numbers for Victor Avenue.

Victoria Street

Table with columns: Odd Nos., New Old, Even Nos., New Old. Lists house numbers for Victoria Street.

Vilas Place

Table with columns: Odd Nos., New Old, Even Nos., New Old. Lists house numbers for Vilas Place.

Vine Street

Table with columns: Odd Nos., New Old, Even Nos., New Old. Lists house numbers for Vine Street.

Wabansia Avenue

Table with columns: Odd Nos., New Old, Even Nos., New Old. Lists house numbers for Wabansia Avenue.

Wade Street

Table with columns: Odd Nos., New Old, Even Nos., New Old. Lists house numbers for Wade Street.

Waldo Place

Table with columns: Odd Nos., New Old, Even Nos., New Old. Lists house numbers for Waldo Place.

Walker Court

Table with columns: Odd Nos., New Old, Even Nos., New Old. Lists house numbers for Walker Court.

Walleck Court

Table with columns: Odd Nos., New Old, Even Nos., New Old. Lists house numbers for Walleck Court.

Waller Street

Table with columns: Odd Nos., New Old, Even Nos., New Old. Lists house numbers for Waller Street.

North Waller Av.

Table with columns: Odd Nos., New Old, Even Nos., New Old. Lists house numbers for North Waller Av.

South Waller Av.

Table with columns: Odd Nos., New Old, Even Nos., New Old. Lists house numbers for South Waller Av.

Walnut Street

Table with columns: Odd Nos., New Old, Even Nos., New Old. Lists house numbers for Walnut Street.

Warner Avenue

Continued table with columns: New Old, Even New, Old New, Even New, Old New, Even New, Old New, Even New, Old New, Even New, Old New, Even New, Old New

Warren Avenue

Main table for Warren Avenue with columns: New Old, Even New, Old New, Even New, Old New, Even New, Old New, Even New, Old New, Even New, Old New, Even New, Old New

Continued table with columns: New Old, Even New, Old New, Even New, Old New, Even New, Old New, Even New, Old New, Even New, Old New, Even New, Old New

Continued table with columns: New Old, Even New, Old New, Even New, Old New, Even New, Old New, Even New, Old New, Even New, Old New, Even New, Old New

Continued table with columns: New Old, Even New, Old New, Even New, Old New, Even New, Old New, Even New, Old New, Even New, Old New, Even New, Old New

Continued table with columns: New Old, Even New, Old New, Even New, Old New, Even New, Old New, Even New, Old New, Even New, Old New, Even New, Old New

Continued table with columns: New Old, Even New, Old New, Even New, Old New, Even New, Old New, Even New, Old New, Even New, Old New, Even New, Old New

Continued table with columns: New Old, Even New, Old New, Even New, Old New, Even New, Old New, Even New, Old New, Even New, Old New, Even New, Old New

Washburne Av.

Main table for Washburne Av. with columns: New Old, Even New, Old New, Even New, Old New, Even New, Old New, Even New, Old New, Even New, Old New, Even New, Old New

Odd Cont

Warsaw Avenue

Table for Warsaw Avenue with columns: New Old, Even New, Old New, Even New, Old New, Even New, Old New, Even New, Old New, Even New, Old New, Even New, Old New

Odd Cont

Warwick Av. (J)

Table for Warwick Av. (J) with columns: New Old, Even New, Old New, Even New, Old New, Even New, Old New, Even New, Old New, Even New, Old New, Even New, Old New

Washington Boul.
CONTINUED

Main table of house numbers with columns for 'New' and 'Old' addresses. Includes sections for 'N. Washington Av.', 'S. Washtenaw Av.', 'Waterloo Court', and 'Watt Avenue'.

Odd Cont

Even Cont

Cont'd 1st col

Waterloo Court

Table for Waterloo Court showing new and old house numbers.

Watt Avenue

Table for Watt Avenue showing new and old house numbers.

S. Washtenaw Av.

Table for S. Washtenaw Av. showing new and old house numbers.

Watt Avenue CONTINUED
Table with columns: Odd Nos., Even Nos., New, Old. Lists house numbers from 11235 to 14217.

Table with columns: Odd Nos., Even Nos., New, Old. Lists house numbers from 2045 to 3707.

Table with columns: Even Nos., Odd Nos., New, Old. Lists house numbers from 2120 to 3716.

Table with columns: Even Nos., Odd Nos., New, Old. Lists house numbers from 5348 to 6823.

Table with columns: Even Nos., Odd Nos., New, Old. Lists house numbers from 5348 to 6823.

Table with columns: Even Nos., Odd Nos., New, Old. Lists house numbers from 5348 to 6823.

Table with columns: Even Nos., Odd Nos., New, Old. Lists house numbers from 5348 to 6823.

Table with columns: Even Nos., Odd Nos., New, Old. Lists house numbers from 5348 to 6823.

Waveland Avenue
Table with columns: Odd Nos., Even Nos., New, Old. Lists house numbers from 713 to 1641.

Table with columns: Odd Nos., Even Nos., New, Old. Lists house numbers from 3707 to 4411.

Table with columns: Even Nos., Odd Nos., New, Old. Lists house numbers from 3716 to 4411.

Table with columns: Even Nos., Odd Nos., New, Old. Lists house numbers from 6823 to 7425.

Table with columns: Even Nos., Odd Nos., New, Old. Lists house numbers from 6823 to 7425.

Table with columns: Even Nos., Odd Nos., New, Old. Lists house numbers from 6823 to 7425.

Table with columns: Even Nos., Odd Nos., New, Old. Lists house numbers from 6823 to 7425.

Table with columns: Even Nos., Odd Nos., New, Old. Lists house numbers from 6823 to 7425.

Waverly Court
Table with columns: Odd Nos., Even Nos., New, Old. Lists house numbers from 1141 to 1641.

Table with columns: Odd Nos., Even Nos., New, Old. Lists house numbers from 4411 to 5207.

Table with columns: Even Nos., Odd Nos., New, Old. Lists house numbers from 4411 to 5207.

Table with columns: Even Nos., Odd Nos., New, Old. Lists house numbers from 7425 to 8117.

Table with columns: Even Nos., Odd Nos., New, Old. Lists house numbers from 7425 to 8117.

Table with columns: Even Nos., Odd Nos., New, Old. Lists house numbers from 7425 to 8117.

Table with columns: Even Nos., Odd Nos., New, Old. Lists house numbers from 7425 to 8117.

Table with columns: Even Nos., Odd Nos., New, Old. Lists house numbers from 7425 to 8117.

Wayne Avenue
Table with columns: Odd Nos., Even Nos., New, Old. Lists house numbers from 1645 to 2043.

Table with columns: Odd Nos., Even Nos., New, Old. Lists house numbers from 5207 to 5411.

Table with columns: Even Nos., Odd Nos., New, Old. Lists house numbers from 5207 to 5411.

Table with columns: Even Nos., Odd Nos., New, Old. Lists house numbers from 8117 to 8917.

Table with columns: Even Nos., Odd Nos., New, Old. Lists house numbers from 8117 to 8917.

Table with columns: Even Nos., Odd Nos., New, Old. Lists house numbers from 8117 to 8917.

Table with columns: Even Nos., Odd Nos., New, Old. Lists house numbers from 8117 to 8917.

Table with columns: Even Nos., Odd Nos., New, Old. Lists house numbers from 8117 to 8917.

Weed Street

Wellington Street

Table with multiple columns for street names (Wellington Street, Wells Place, Wendell Street, West End Avenue, Wellington Court, Wells Street) and rows for house numbers, categorized into 'Odd Nos.' and 'Even Nos.' with 'New' and 'Old' sub-categories. Includes 'Continued' labels and 'Even Cont' markers.

West End Avenue

Table with columns: Odd Nos., Even Nos., New, Old. Rows include numbers like 1305, 1309, 664, 686, etc.

Odd Nos.

Table with columns: New, Old. Rows include numbers like 1305, 1309, 664, 686, etc.

Even Nos.

Table with columns: New, Old. Rows include numbers like 940, 946, 948, 950, etc.

Odd Nos.

Table with columns: New, Old. Rows include numbers like 2215, 2219, 2221, 2225, etc.

Even Nos.

Table with columns: New, Old. Rows include numbers like 1618, 1622, 1624, 1626, etc.

Odd Nos.

Table with columns: New, Old. Rows include numbers like 4533, 4537, 4541, 4545, etc.

Even Nos.

Table with columns: New, Old. Rows include numbers like 2346, 2348, 2350, 2352, etc.

Odd Nos.

Table with columns: New, Old. Rows include numbers like 5106, 5110, 5114, 5118, etc.

Even Nos.

Table with columns: New, Old. Rows include numbers like 4012, 4016, 4020, 4024, etc.

Odd Nos.

Table with columns: New, Old. Rows include numbers like 4012, 4016, 4020, 4024, etc.

Odd Cont

Table with columns: New, Old. Rows include numbers like 5715, 5717, 5827, 5829, etc.

North Western Av.

Table with columns: Odd Nos., Even Nos., New, Old. Rows include numbers like 9, 10, 11, 12, 13, etc.

Odd Nos.

Table with columns: New, Old. Rows include numbers like 1421, 1423, 1425, 1427, etc.

Even Nos.

Table with columns: New, Old. Rows include numbers like 1046, 1048, 1050, 1052, etc.

Odd Nos.

Table with columns: New, Old. Rows include numbers like 2215, 2219, 2221, 2225, etc.

Even Nos.

Table with columns: New, Old. Rows include numbers like 1714, 1716, 1718, 1720, etc.

Odd Nos.

Table with columns: New, Old. Rows include numbers like 4049, 4051, 4053, 4055, etc.

Even Nos.

Table with columns: New, Old. Rows include numbers like 2796, 2798, 2800, 2802, etc.

Odd Nos.

Table with columns: New, Old. Rows include numbers like 2796, 2798, 2800, 2802, etc.

Even Nos.

Table with columns: New, Old. Rows include numbers like 2796, 2798, 2800, 2802, etc.

South Western Av.

Table with columns: Odd Nos., Even Nos., New, Old. Rows include numbers like 15, 16, 17, 18, 19, etc.

Cont'd last col

Fournoy

Table with columns: Odd Nos., Even Nos., New, Old. Rows include numbers like 701, 703, 705, 707, etc.

Even Cont

Table with columns: New, Old. Rows include numbers like 4320, 4324, 4328, 4332, etc.

Byron

Table with columns: New, Old. Rows include numbers like 2422, 2424, 2426, 2428, etc.

near

Table with columns: New, Old. Rows include numbers like 3901, 3903, 3905, 3907, etc.

1040

Table with columns: New, Old. Rows include numbers like 1040, 1042, 1044, 1046, etc.

1040

Table with columns: New, Old. Rows include numbers like 1040, 1042, 1044, 1046, etc.

South Western Av.

Table with 3 columns: Old, New, Old. Rows 1-1000.

Odd Nos. Old

Table with 3 columns: Old, New, Old. Rows 1-1000.

Even Nos. Old

Table with 3 columns: Old, New, Old. Rows 1-1000.

Odd Nos. Old

Table with 3 columns: Old, New, Old. Rows 1-1000.

Even Nos. Old

Table with 3 columns: Old, New, Old. Rows 1-1000.

Odd Nos. Old

Table with 3 columns: Old, New, Old. Rows 1-1000.

Even Nos. Old

Table with 3 columns: Old, New, Old. Rows 1-1000.

Odd Nos. Old

Table with 3 columns: Old, New, Old. Rows 1-1000.

Even Nos. Old

Table with 3 columns: Old, New, Old. Rows 1-1000.

Even Nos. Old

Table with 3 columns: Old, New, Old. Rows 1-1000.

Wieland Street

Table with 3 columns: Old, New, Old. Rows 1-1000.

Wilcox Avenue

Table with 3 columns: Old, New, Old. Rows 1-1000.

Even Cont

Table with 3 columns: Old, New, Old. Rows 1-1000.

Even Cont

Table with 3 columns: Old, New, Old. Rows 1-1000.

Cont'd last col

Table with 3 columns: Old, New, Old. Rows 1-1000.

South Whipple St.

Table with 3 columns: Old, New, Old. Rows 1-1000.

North Whipple St.

Table with 3 columns: Old, New, Old. Rows 1-1000.

Odd Cont

Table with 3 columns: Old, New, Old. Rows 1-1000.

Whiting Street

Table with 3 columns: Old, New, Old. Rows 1-1000.

Wilcox Avenue
CONTINUED

Table with 4 columns: Odd Nos. New, Even Nos. New, Odd Nos. Old, Even Nos. Old. Lists house numbers along Wilcox Avenue from 2729 to 4239.

Odd Nos. New, Even Nos. New, Odd Nos. Old, Even Nos. Old

Table with 4 columns: Odd Nos. New, Even Nos. New, Odd Nos. Old, Even Nos. Old. Lists house numbers from 4241 to 4531.

Even Nos. New, Odd Nos. New, Even Nos. Old, Odd Nos. Old

Table with 4 columns: Even Nos. New, Odd Nos. New, Even Nos. Old, Odd Nos. Old. Lists house numbers from 4242 to 4532.

Even Nos. New, Odd Nos. New, Even Nos. Old, Odd Nos. Old

Table with 4 columns: Even Nos. New, Odd Nos. New, Even Nos. Old, Odd Nos. Old. Lists house numbers from 707 to 1755.

Even Nos. New, Odd Nos. New, Even Nos. Old, Odd Nos. Old

Table with 4 columns: Even Nos. New, Odd Nos. New, Even Nos. Old, Odd Nos. Old. Lists house numbers from 724 to 1756.

Even Nos. New, Odd Nos. New, Even Nos. Old, Odd Nos. Old

Table with 4 columns: Even Nos. New, Odd Nos. New, Even Nos. Old, Odd Nos. Old. Lists house numbers from 1829 to 1757.

Even Nos. New, Odd Nos. New, Even Nos. Old, Odd Nos. Old

Table with 4 columns: Even Nos. New, Odd Nos. New, Even Nos. Old, Odd Nos. Old. Lists house numbers from 1738 to 1834.

Even Nos. New, Odd Nos. New, Even Nos. Old, Odd Nos. Old

Table with 4 columns: Even Nos. New, Odd Nos. New, Even Nos. Old, Odd Nos. Old. Lists house numbers from 1443 to 1759.

Even Nos. New, Odd Nos. New, Even Nos. Old, Odd Nos. Old

Table with 4 columns: Even Nos. New, Odd Nos. New, Even Nos. Old, Odd Nos. Old. Lists house numbers from 1530 to 1829.

Even Cont

Table with 4 columns: Even Nos. New, Odd Nos. New, Even Nos. Old, Odd Nos. Old. Lists house numbers from 920 to 958.

Cont'd 1st col

North Willow Av.

Table with 4 columns: Even Nos. New, Odd Nos. New, Even Nos. Old, Odd Nos. Old. Lists house numbers from 15 to 119.

Even Cont

Table with 4 columns: Even Nos. New, Odd Nos. New, Even Nos. Old, Odd Nos. Old. Lists house numbers from 2030 to 2058.

Cont'd 1st col

Wilson Avenue

Table with 4 columns: Even Nos. New, Odd Nos. New, Even Nos. Old, Odd Nos. Old. Lists house numbers from 801 to 901.

Wilton Avenue

Table with 4 columns: Even Nos. New, Odd Nos. New, Even Nos. Old, Odd Nos. Old. Lists house numbers from 3507 to 3641.

Will Street

Table with 4 columns: Even Nos. New, Odd Nos. New, Even Nos. Old, Odd Nos. Old. Lists house numbers from 911 to 951.

Willard Court

Table with 4 columns: Even Nos. New, Odd Nos. New, Even Nos. Old, Odd Nos. Old. Lists house numbers from 117 to 125.

Willetts Court

Table with 4 columns: Even Nos. New, Odd Nos. New, Even Nos. Old, Odd Nos. Old. Lists house numbers from 2500 to 2510.

Willis Court

Table with 4 columns: Even Nos. New, Odd Nos. New, Even Nos. Old, Odd Nos. Old. Lists house numbers from 1301 to 1341.

Willow Street

Table with 4 columns: Even Nos. New, Odd Nos. New, Even Nos. Old, Odd Nos. Old. Lists house numbers from 611 to 637.

Wilnot Avenue

Table with 4 columns: Even Nos. New, Odd Nos. New, Even Nos. Old, Odd Nos. Old. Lists house numbers from 1751 to 1827.

Wilton Avenue

Table with columns: Odd New, Even New, Odd Old, Even Old. Rows list house numbers along Wilton Avenue.

Continued

Continuation of the table from Wilton Avenue.

Winnemac Avenue

Table with columns: Odd New, Even New, Odd Old, Even Old. Rows list house numbers along Winnemac Avenue.

N. Winchester Av.

Table with columns: Odd New, Even New, Odd Old, Even Old. Rows list house numbers along N. Winchester Av.

Windsor Avenue

Table with columns: Odd New, Even New, Odd Old, Even Old. Rows list house numbers along Windsor Avenue.

S. Winchester Av.

Table with columns: Odd New, Even New, Odd Old, Even Old. Rows list house numbers along S. Winchester Av.

Winnemac Avenue

Table with columns: Odd New, Even New, Odd Old, Even Old. Rows list house numbers along Winnemac Avenue.

Winona Street

Table with columns: Odd New, Even New, Odd Old, Even Old. Rows list house numbers along Winona Street.

Continued

Continuation of the table from N. Winchester Av.

Continued

Continuation of the table from S. Winchester Av.

Continued

Continuation of the table from Winnemac Avenue.

Continued

Continuation of the table from Windsor Avenue.

Continued

Continuation of the table from Winnemac Avenue.

Continued

Continuation of the table from Winona Street.

Continued

Continuation of the table from Winona Street.

Continued

Continuation of the table from Winona Street.

Continued list of house numbers and page number 171.

NEW AND OLD HOUSE NUMBERS

Table with 15 columns: Wood Street (Odd Nos., Even Nos.), S. Wood Street, Woodward Street, Woodland Park, Wright Street, Even Cent, and Wright Court. Each column contains multiple columns of house numbers ranging from 1 to 1819.

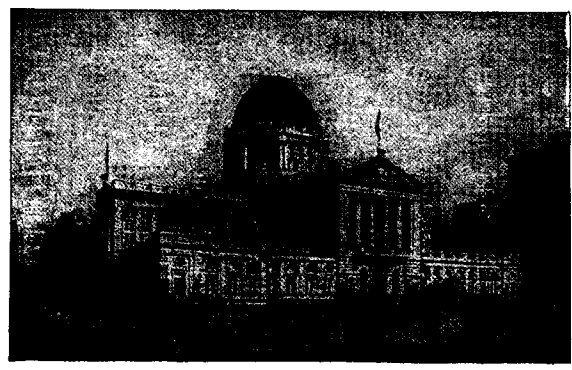
NEW AND OLD HOUSE NUMBERS

Wrightwood Ave. CONTINUED		Odd Nos. New Old	Even Nos. New Old	Odd Nos. New Old	Even Nos. New Old	Odd Nos. New Old	Even Nos. New Old	Odd Nos. New Old	Even Nos. New Old
3287 618w	3318 643w	3541 768w	3508 737w	3707 872w	3634 831w	1837 38	1816 17	1649 98	1714 123
3303 621w	3320 647w	3543 772w	3510 741w	3711 878w	3636 833w	1841 40	1818 19	1745 146	1716 125
3309 634w	3328 653w	3547 776w	3514 743w	3717 884w	3806 935w	1845 44	1820 21		1718 127
3311 636w	3416 679w	3549 778w	3516 745w	3719 886w	3808 937w		1822 23		1720 129
3315 640w	3420 683w	3553 782w	3520 749w	3723 888w	3814 943w		1824 25		1722 131
3317 644w	3424 685w	3601 788w	3524 751w	3757 924w	3818 947w		1828 27		1724 133
3321 648w	3426 689w	3603 802w	3536 765w	3759 926w	3834 965w		1830 29		1742 143
3323 648w	3434 697w	3607 804w	3538 767w	3905 1002w	3848 977w		1832 31		1744 145
3327 654w	3438 701w	3609 806w	3542 769w	3937 1034w	3854 983w		1834 33		
3505 734w	3442 705w	3611 808w	3544 771w	3943 1040w			1836 35		
3509 736w	3444 707w	3615 810w	3546 773w				1840 39		
3511 740w	3446 709w	3623 820w	3548 779w				1842 43		
3513 744w	3448 711w	3625 822w	3552 781w				1844 45		
3517 746w	3450 715w	3637 832w	3554 783w						
3519 748w	3454 717w	3639 838w	3556 787w	1819 20	1800 1				
3523 750w	3458 719w	3643 840w	3600 797w	1821 22	1802 3				
3535 762w	3500 729w	3645 842w	3602 801w	1823 24	1804 5	1511 12	1502 7		
3537 764w	3504 733w	3651 848w	3606 803w	1825 26	1806 7	1515 14	1512 9		
		3655 852w	3608 805w	1829 28	1808 9	1519 20	1532 31		
		3657 856w	3610 809w	1831 30	1810 11	1521 22	1538 39		
		3703 868w	3616 815w	1833 32	1812 13	1533 32	1616 73		
			3624 821w	1835 34	1814 15	1537 36	1648 95		

Yeaton Street

York Street

York Place



Federal Building

Above is shown a view taken from the Lakeside Guide of Chicago. This book contains useful and interesting information concerning Chicago. It tells of Places of Amusement, Public Buildings and Attractions, Railroad Depots, Locations of Streets, etc., and is, in fact, an index to everything of note in Chicago. A large map of the City of Chicago is given FREE with each book. Mail 40 cents (stamps will do), and we will send the book by return mail.

The Chicago Directory Company
141 to 155 Plymouth Court, Chicago, Ill.

THE RED BOOK

Lakeside Business Directory of Chicago

Classifies in detail all commercial industries, professional enterprises, wholesale and retail establishments, agents, etc., and contains a complete alphabetical list of business people, a street index, city and county organizations, etc.

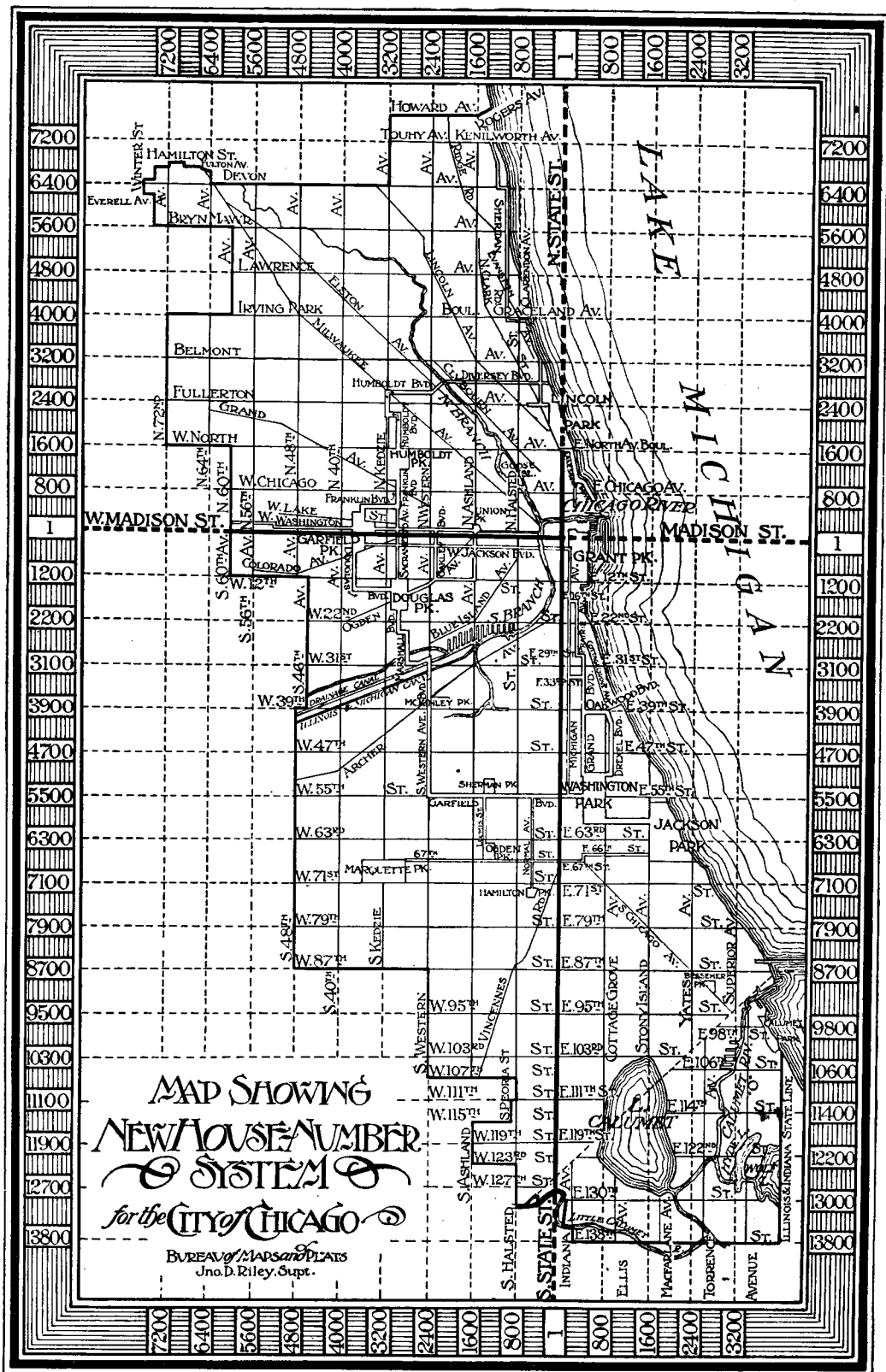
The 1909 edition will be issued in October, and will be of more than usual value to subscribers and advertisers, for it will be the first publication to show all of the new house numbers, giving the correct addresses for all individuals and firms engaged in business in this city.

The street and avenue guide will show both the new and old numbers at the corners of all intersecting streets.

This directory will contain about 1800 pages, substantially bound in red cloth. Price is \$3.50.

The Chicago Directory Co.

149 Plymouth Court, Chicago



MAD SHOWING
 NEW HOUSE NUMBER
 SYSTEM
 for the CITY OF CHICAGO

BUREAU OF MAPS AND PLATS
 Jno. D. Riley, Supt.